

FANCB Antibody (Center)
Affinity Purified Rabbit Polyclonal Antibody (Pab)
Catalog # AP18051C**Specification**

FANCB Antibody (Center) - Product Information

Application	WB,E
Primary Accession	Q8NB91
Other Accession	NP_001018123.1
Reactivity	Human
Host	Rabbit
Clonality	Polyclonal
Isotype	Rabbit IgG
Calculated MW	97726
Antigen Region	360-388

FANCB Antibody (Center) - Additional Information**Gene ID** 2187**Other Names**

Fanconi anemia group B protein, Protein FACB, Fanconi anemia-associated polypeptide of 95 kDa, FAAP95, FANCB

Target/Specificity

This FANCB antibody is generated from rabbits immunized with a KLH conjugated synthetic peptide between 360-388 amino acids from the Central region of human FANCB.

Dilution

WB~~1:1000

E~~Use at an assay dependent concentration.

Format

Purified polyclonal antibody supplied in PBS with 0.09% (W/V) sodium azide. This antibody is purified through a protein A column, followed by peptide affinity purification.

Storage

Maintain refrigerated at 2-8°C for up to 2 weeks. For long term storage store at -20°C in small aliquots to prevent freeze-thaw cycles.

Precautions

FANCB Antibody (Center) is for research use only and not for use in diagnostic or therapeutic procedures.

FANCB Antibody (Center) - Protein Information**Name** FANCB

Function DNA repair protein required for FANCD2 ubiquitination.

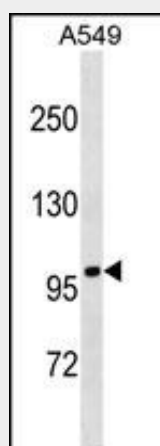
Cellular Location
Nucleus.

FANCB Antibody (Center) - Protocols

Provided below are standard protocols that you may find useful for product applications.

- [Western Blot](#)
- [Blocking Peptides](#)
- [Dot Blot](#)
- [Immunohistochemistry](#)
- [Immunofluorescence](#)
- [Immunoprecipitation](#)
- [Flow Cytometry](#)
- [Cell Culture](#)

FANCB Antibody (Center) - Images



FANCB Antibody (Center) (Cat. #AP18051c) western blot analysis in A549 cell line lysates (35ug/lane). This demonstrates the FANCB antibody detected the FANCB protein (arrow).

FANCB Antibody (Center) - Background

The Fanconi anemia complementation group (FANC) currently includes FANCA, FANCB, FANCC, FANCD1 (also called BRCA2), FANCD2, FANCE, FANCF, FANCG, FANCI, FANCI (also called BRIP1), FANCL, FANCM and FANCN (also called PALB2). The previously defined group FANCH is the same as FANCA. Fanconi anemia is a genetically heterogeneous recessive disorder characterized by cytogenetic instability, hypersensitivity to DNA crosslinking agents, increased chromosomal breakage, and defective DNA repair. The members of the Fanconi anemia complementation group do not share sequence similarity; they are related by their assembly into a common nuclear protein complex. This gene encodes the protein for complementation group B. Alternative splicing results in two transcript variants encoding the same protein.

FANCB Antibody (Center) - References

Cheung, K.L., et al. World J Surg Oncol 8, 38 (2010) :
Smith, I.M., et al. ORL J. Otorhinolaryngol. Relat. Spec. 72(1):44-50(2010)
Barroso, E., et al. Breast Cancer Res. Treat. 118(3):655-660(2009)
Garcia, M.J., et al. Breast Cancer Res. Treat. 113(3):545-551(2009)
Nomura, Y., et al. Genes Cells 12(10):1111-1122(2007)