

ASB7 Antibody (Center)
Affinity Purified Rabbit Polyclonal Antibody (Pab)
Catalog # AP18060c**Specification**

ASB7 Antibody (Center) - Product Information

Application	WB,E
Primary Accession	Q9H672
Other Accession	Q91ZU0 , Q9BGT9 , NP_078984.2
Reactivity	Human
Predicted	Monkey, Mouse
Host	Rabbit
Clonality	Polyclonal
Isotype	Rabbit IgG
Calculated MW	36011
Antigen Region	82-108

ASB7 Antibody (Center) - Additional Information**Gene ID** 140460**Other Names**

Ankyrin repeat and SOCS box protein 7, ASB-7, ASB7

Target/Specificity

This ASB7 antibody is generated from rabbits immunized with a KLH conjugated synthetic peptide between 82-108 amino acids from the Central region of human ASB7.

Dilution

WB~~1:1000

E~~Use at an assay dependent concentration.

Format

Purified polyclonal antibody supplied in PBS with 0.09% (W/V) sodium azide. This antibody is purified through a protein A column, followed by peptide affinity purification.

Storage

Maintain refrigerated at 2-8°C for up to 2 weeks. For long term storage store at -20°C in small aliquots to prevent freeze-thaw cycles.

Precautions

ASB7 Antibody (Center) is for research use only and not for use in diagnostic or therapeutic procedures.

ASB7 Antibody (Center) - Protein Information**Name** ASB7

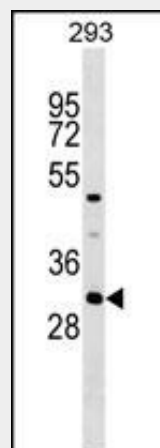
Function Probable substrate-recognition component of a SCF-like ECS (Elongin-Cullin-SOCS-box protein) E3 ubiquitin-protein ligase complex which mediates the ubiquitination and subsequent proteasomal degradation of target proteins. Plays a role in spindle dynamics and genome integrity by targeting the mitotic progression protein PSRC1 for proteasomal degradation in a cell cycle-dependent manner (PubMed:[27697924](#)). Also participates in meiosis by mediating the proper attachment between kinetochores and microtubules (By similarity).

ASB7 Antibody (Center) - Protocols

Provided below are standard protocols that you may find useful for product applications.

- [Western Blot](#)
- [Blocking Peptides](#)
- [Dot Blot](#)
- [Immunohistochemistry](#)
- [Immunofluorescence](#)
- [Immunoprecipitation](#)
- [Flow Cytometry](#)
- [Cell Culture](#)

ASB7 Antibody (Center) - Images



ASB7 Antibody (Center) (Cat. #AP18060c) western blot analysis in 293 cell line lysates (35ug/lane). This demonstrates the ASB7 antibody detected the ASB7 protein (arrow).

ASB7 Antibody (Center) - Background

The protein encoded by this gene belongs to a family of ankyrin repeat proteins that, along with four other protein families, contains a C-terminal SOCS box motif. Growing evidence suggests that the SOCS box acts as a bridge between specific substrate-binding domains and the more generic proteins that comprise a large family of E3 ubiquitin protein ligases. In this way, SOCS box containing proteins may regulate protein turnover by targeting proteins for polyubiquitination and, therefore, for proteasome-mediated degradation. Two alternative transcripts encoding different isoforms have been described. [provided by RefSeq].

ASB7 Antibody (Center) - References

Lamesch, P., et al. Genomics 89(3):307-315(2007)
Fu, G.K., et al. Genomics 84(1):205-210(2004)
Kile, B.T., et al. Trends Biochem. Sci. 27(5):235-241(2002)