

**BCL7C Antibody (N-term)**  
**Affinity Purified Rabbit Polyclonal Antibody (Pab)**  
**Catalog # AP18065a****Specification**

---

**BCL7C Antibody (N-term) - Product Information**

Application	WB,E
Primary Accession	<a href="#">O8WUZ0</a>
Other Accession	<a href="#">O08664</a> , <a href="#">NP_004756.2</a>
Reactivity	Human
Predicted	Mouse
Host	Rabbit
Clonality	Polyclonal
Isotype	Rabbit IgG
Calculated MW	23468
Antigen Region	8-34

**BCL7C Antibody (N-term) - Additional Information****Gene ID** 9274**Other Names**

B-cell CLL/lymphoma 7 protein family member C, BCL7C

**Target/Specificity**

This BCL7C antibody is generated from rabbits immunized with a KLH conjugated synthetic peptide between 8-34 amino acids from the N-terminal region of human BCL7C.

**Dilution**

WB~~1:1000

E~~Use at an assay dependent concentration.

**Format**

Purified polyclonal antibody supplied in PBS with 0.09% (W/V) sodium azide. This antibody is purified through a protein A column, followed by peptide affinity purification.

**Storage**

Maintain refrigerated at 2-8°C for up to 2 weeks. For long term storage store at -20°C in small aliquots to prevent freeze-thaw cycles.

**Precautions**

BCL7C Antibody (N-term) is for research use only and not for use in diagnostic or therapeutic procedures.

**BCL7C Antibody (N-term) - Protein Information****Name** BCL7C

**Function** May play an anti-apoptotic role.

**Tissue Location**

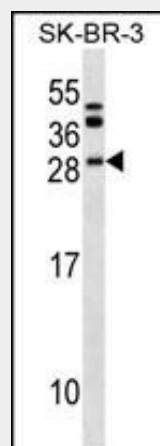
Ubiquitous..

**BCL7C Antibody (N-term) - Protocols**

Provided below are standard protocols that you may find useful for product applications.

- [Western Blot](#)
- [Blocking Peptides](#)
- [Dot Blot](#)
- [Immunohistochemistry](#)
- [Immunofluorescence](#)
- [Immunoprecipitation](#)
- [Flow Cytometry](#)
- [Cell Culture](#)

**BCL7C Antibody (N-term) - Images**



BCL7C Antibody (N-term) (Cat. #AP18065a) western blot analysis in SK-BR-3 cell line lysates (35ug/lane). This demonstrates the BCL7C antibody detected the BCL7C protein (arrow).

**BCL7C Antibody (N-term) - Background**

This gene is identified by the similarity of its product to the N-terminal region of BCL7A protein. The BCL7A protein is encoded by the gene known to be directly involved in a three-way gene translocation in a Burkitt lymphoma cell line. The function of this gene has not yet been determined.

**BCL7C Antibody (N-term) - References**

Hosgood, H.D. III, et al. Occup Environ Med 66(12):848-853(2009)  
Liang, X.S., et al. Br. J. Haematol. 146(4):418-423(2009)  
Morton, L.M., et al. Cancer Epidemiol. Biomarkers Prev. 18(4):1259-1270(2009)  
Lamesch, P., et al. Genomics 89(3):307-315(2007)  
Olsen, J.V., et al. Cell 127(3):635-648(2006)