

MS4A3 Antibody (Center)
Affinity Purified Rabbit Polyclonal Antibody (Pab)
Catalog # AP18066c**Specification**

MS4A3 Antibody (Center) - Product Information

Application	WB,E
Primary Accession	O96HJ5
Other Accession	NP_001026836.1
Reactivity	Human
Host	Rabbit
Clonality	Polyclonal
Isotype	Rabbit IgG
Antigen Region	97-123

MS4A3 Antibody (Center) - Additional Information**Gene ID** 932**Other Names**

Membrane-spanning 4-domains subfamily A member 3, CD20 antigen-like protein, Hematopoietic-specific transmembrane protein 4, HTm4, MS4A3, CD20L, HTM4

Target/Specificity

This MS4A3 antibody is generated from rabbits immunized with a KLH conjugated synthetic peptide between 97-123 amino acids from the Central region of human MS4A3.

Dilution

WB~~1:1000

E~~Use at an assay dependent concentration.

Format

Purified polyclonal antibody supplied in PBS with 0.09% (W/V) sodium azide. This antibody is purified through a protein A column, followed by peptide affinity purification.

Storage

Maintain refrigerated at 2-8°C for up to 2 weeks. For long term storage store at -20°C in small aliquots to prevent freeze-thaw cycles.

Precautions

MS4A3 Antibody (Center) is for research use only and not for use in diagnostic or therapeutic procedures.

MS4A3 Antibody (Center) - Protein Information**Name** MS4A3**Synonyms** CD20L, HTM4

Function Hematopoietic modulator for the G1-S cell cycle transition. Modulates the level of phosphorylation of cyclin-dependent kinase 2 (CDK2) through its direct binding to cyclin-dependent kinase inhibitor 3 (CDKN3/KAP).

Cellular Location

Endomembrane system; Multi-pass membrane protein. Cytoplasm, perinuclear region.

Note=Located in the perinuclear area

Tissue Location

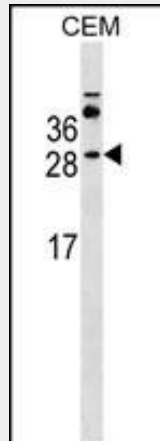
Expressed specifically in hematopoietic cells and tissues

MS4A3 Antibody (Center) - Protocols

Provided below are standard protocols that you may find useful for product applications.

- [Western Blot](#)
- [Blocking Peptides](#)
- [Dot Blot](#)
- [Immunohistochemistry](#)
- [Immunofluorescence](#)
- [Immunoprecipitation](#)
- [Flow Cytometry](#)
- [Cell Culture](#)

MS4A3 Antibody (Center) - Images



MS4A3 Antibody (Center) (Cat. #AP18066c) western blot analysis in CEM cell line lysates (35ug/lane). This demonstrates the MS4A3 antibody detected the MS4A3 protein (arrow).

MS4A3 Antibody (Center) - Background

This gene encodes a member of the membrane-spanning 4A gene family. Members of this protein family are characterized by common structural features and similar intron/exon splice boundaries and display unique expression patterns among hematopoietic cells and nonlymphoid tissues. This family member likely plays a role in signal transduction and may function as a subunit associated with receptor complexes. The gene encoding this protein is localized to 11q12, among a cluster of related family members. Alternative splicing may result in multiple transcript

variants; however, not all variants have been fully described.

MS4A3 Antibody (Center) - References

Shimada, M., et al. Hum. Genet. 128(4):433-441(2010)
Davila, S., et al. Genes Immun. 11(3):232-238(2010)
Lamesch, P., et al. Genomics 89(3):307-315(2007)
Chinami, M., et al. J. Biol. Chem. 280(17):17235-17242(2005)
Donato, J.L., et al. J. Clin. Invest. 109(1):51-58(2002)