

METTL7B Antibody (N-term)
Affinity Purified Rabbit Polyclonal Antibody (Pab)
Catalog # AP18067a

Specification

METTL7B Antibody (N-term) - Product Information

Application	WB,E
Primary Accession	Q6UX53
Other Accession	Q562C4 , Q9DD20 , NP_689850.2
Reactivity	Human, Mouse
Predicted	Rat
Host	Rabbit
Clonality	Polyclonal
Isotype	Rabbit IgG
Calculated MW	27775
Antigen Region	37-63

METTL7B Antibody (N-term) - Additional Information

Gene ID 196410

Other Names

Methyltransferase-like protein 7B, 211-, METTL7B

Target/Specificity

This METTL7B antibody is generated from rabbits immunized with a KLH conjugated synthetic peptide between 37-63 amino acids from the N-terminal region of human METTL7B.

Dilution

WB~~1:1000

E~~Use at an assay dependent concentration.

Format

Purified polyclonal antibody supplied in PBS with 0.09% (W/V) sodium azide. This antibody is purified through a protein A column, followed by peptide affinity purification.

Storage

Maintain refrigerated at 2-8°C for up to 2 weeks. For long term storage store at -20°C in small aliquots to prevent freeze-thaw cycles.

Precautions

METTL7B Antibody (N-term) is for research use only and not for use in diagnostic or therapeutic procedures.

METTL7B Antibody (N-term) - Protein Information

Name TMT1B {ECO:0000303|PubMed:37137720, ECO:0000312|HGNC:HGNC:28276}

Function Thiol S-methyltransferase that catalyzes the transfer of a methyl group from S-adenosyl-L-methionine to alkyl and phenolic thiol- containing acceptor substrates. Together with TMT1B accounts for most of S-thiol methylation activity in the endoplasmic reticulum of hepatocytes. Selectively methylates S-centered nucleophiles from metabolites such as hydrogen sulfide and dithiothreitol.

Cellular Location

Endoplasmic reticulum membrane {ECO:0000250|UniProtKB:Q562C4}; Peripheral membrane protein {ECO:0000250|UniProtKB:Q562C4}. Lipid droplet {ECO:0000250|UniProtKB:Q562C4}. Microsome. Cytoplasm, cytosol. Note=Highly concentrated in the perinuclear area of the endoplasmic reticulum (ER) and surrounding lipid droplets. May be associated with the specific regions of the LR that form lipid droplets and targeted to the initial deposits of lipids where the lipid droplets form. {ECO:0000250|UniProtKB:Q562C4}

Tissue Location

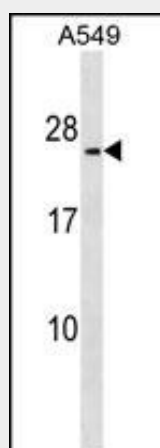
Expressed in the liver.

METTL7B Antibody (N-term) - Protocols

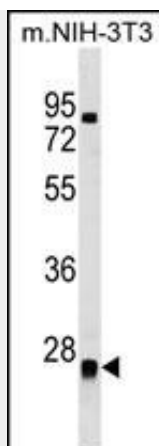
Provided below are standard protocols that you may find useful for product applications.

- [Western Blot](#)
- [Blocking Peptides](#)
- [Dot Blot](#)
- [Immunohistochemistry](#)
- [Immunofluorescence](#)
- [Immunoprecipitation](#)
- [Flow Cytometry](#)
- [Cell Culture](#)

METTL7B Antibody (N-term) - Images



METTL7B Antibody (N-term) (Cat. #AP18067a) western blot analysis in A549 cell line lysates (35ug/lane). This demonstrates the METTL7B antibody detected the METTL7B protein (arrow).



METTL7B Antibody (N-term) (Cat. #AP18067a) western blot analysis in mouse NIH-3T3 cell line lysates (35ug/lane). This demonstrates the METTL7B antibody detected the METTL7B protein (arrow).

METTL7B Antibody (N-term) - Background

METTL7B is probable methyltransferase (By similarity).

METTL7B Antibody (N-term) - References

Clark, H.F., et al. Genome Res. 13(10):2265-2270(2003)