

**GLB1L3 Antibody (C-term)**  
**Affinity Purified Rabbit Polyclonal Antibody (Pab)**  
**Catalog # AP18080b****Specification**

---

**GLB1L3 Antibody (C-term) - Product Information**

Application	WB,E
Primary Accession	<a href="#">Q8NCI6</a>
Other Accession	<a href="#">NP_001073876.2</a>
Reactivity	Human
Host	Rabbit
Clonality	Polyclonal
Isotype	Rabbit IgG
Calculated MW	74823
Antigen Region	475-501

**GLB1L3 Antibody (C-term) - Additional Information****Gene ID** 112937**Other Names**

Beta-galactosidase-1-like protein 3, 321-, GLB1L3

**Target/Specificity**

This GLB1L3 antibody is generated from rabbits immunized with a KLH conjugated synthetic peptide between 475-501 amino acids from the C-terminal region of human GLB1L3.

**Dilution**

WB~~1:1000

**Format**

Purified polyclonal antibody supplied in PBS with 0.09% (W/V) sodium azide. This antibody is purified through a protein A column, followed by peptide affinity purification.

**Storage**

Maintain refrigerated at 2-8°C for up to 2 weeks. For long term storage store at -20°C in small aliquots to prevent freeze-thaw cycles.

**Precautions**

GLB1L3 Antibody (C-term) is for research use only and not for use in diagnostic or therapeutic procedures.

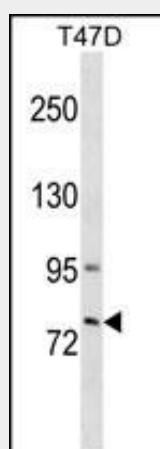
**GLB1L3 Antibody (C-term) - Protein Information****Name** GLB1L3

## GLB1L3 Antibody (C-term) - Protocols

Provided below are standard protocols that you may find useful for product applications.

- [Western Blot](#)
- [Blocking Peptides](#)
- [Dot Blot](#)
- [Immunohistochemistry](#)
- [Immunofluorescence](#)
- [Immunoprecipitation](#)
- [Flow Cytometry](#)
- [Cell Culture](#)

## GLB1L3 Antibody (C-term) - Images



GLB1L3 Antibody (C-term) (Cat. #AP18080b) western blot analysis in T47D cell line lysates (35ug/lane). This demonstrates the GLB1L3 antibody detected the GLB1L3 protein (arrow).

## GLB1L3 Antibody (C-term) - Background

GLB1L3 belongs to the glycosyl hydrolase 35 family.

## GLB1L3 Antibody (C-term) - References

Rose, J. Phd, et al. Mol. Med. (2010) In press :  
Taylor, T.D., et al. Nature 440(7083):497-500(2006)