

SH3RF2 Antibody (Center)
Affinity Purified Rabbit Polyclonal Antibody (Pab)
Catalog # AP18082c**Specification**

SH3RF2 Antibody (Center) - Product Information

Application	WB,E
Primary Accession	Q8TEC5
Other Accession	NP_689763.3
Reactivity	Human
Host	Rabbit
Clonality	Polyclonal
Isotype	Rabbit IgG
Calculated MW	79320
Antigen Region	457-483

SH3RF2 Antibody (Center) - Additional Information**Gene ID** 153769**Other Names**

Putative E3 ubiquitin-protein ligase SH3RF2, 632-, Heart protein phosphatase 1-binding protein, HEPP1, Protein phosphatase 1 regulatory subunit 39, RING finger protein 158, SH3 domain-containing RING finger protein 2, SH3RF2, PPP1R39, RNF158

Target/Specificity

This SH3RF2 antibody is generated from rabbits immunized with a KLH conjugated synthetic peptide between 457-483 amino acids from the Central region of human SH3RF2.

Dilution

WB~~1:1000

E~~Use at an assay dependent concentration.

Format

Purified polyclonal antibody supplied in PBS with 0.09% (W/V) sodium azide. This antibody is purified through a protein A column, followed by peptide affinity purification.

Storage

Maintain refrigerated at 2-8°C for up to 2 weeks. For long term storage store at -20°C in small aliquots to prevent freeze-thaw cycles.

Precautions

SH3RF2 Antibody (Center) is for research use only and not for use in diagnostic or therapeutic procedures.

SH3RF2 Antibody (Center) - Protein Information**Name** SH3RF2

Function Has E3 ubiquitin-protein ligase activity (PubMed:[24130170](#)). Acts as an anti-apoptotic regulator of the JNK pathway by ubiquitinating and promoting the degradation of SH3RF1, a scaffold protein that is required for pro-apoptotic JNK activation (PubMed:[22128169](#)). Facilitates TNF-alpha-mediated recruitment of adapter proteins TRADD and RIPK1 to TNFRSF1A and regulates PAK4 protein stability via inhibition of its ubiquitin-mediated proteasomal degradation (PubMed:[24130170](#)). Inhibits PPP1CA phosphatase activity (PubMed:[19389623](#), PubMed:[19945436](#)).

Cellular Location

Nucleus.

Tissue Location

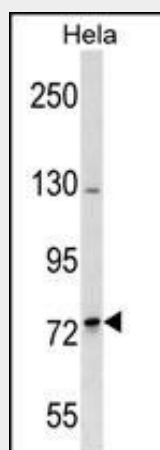
Heart (at protein level). Up-regulated in colon cancer tissues as compared to normal colon tissues (at protein level) Testis. In the heart, present in the apex, left atrium, right atrium, left ventricle and right ventricle, but not in the aorta

SH3RF2 Antibody (Center) - Protocols

Provided below are standard protocols that you may find useful for product applications.

- [Western Blot](#)
- [Blocking Peptides](#)
- [Dot Blot](#)
- [Immunohistochemistry](#)
- [Immunofluorescence](#)
- [Immunoprecipitation](#)
- [Flow Cytometry](#)
- [Cell Culture](#)

SH3RF2 Antibody (Center) - Images



SH3RF2 Antibody (Center) (Cat. #AP18082c) western blot analysis in HeLa cell line lysates (35ug/lane). This demonstrates the SH3RF2 antibody detected the SH3RF2 protein (arrow).

SH3RF2 Antibody (Center) - Background

SH3RF2 may be a E3 ubiquitin-protein ligase (Potential).

SH3RF2 Antibody (Center) - References

Rose, J.E., et al. Mol. Med. 16 (7-8), 247-253 (2010) :
Chen, C.Y., et al. Biochem. Biophys. Res. Commun. 391(1):698-702(2010)
Voss, M., et al. BMC Immunol. 10, 53 (2009) :