

LYZL4 Antibody (Center)
Affinity Purified Rabbit Polyclonal Antibody (Pab)
Catalog # AP18093C**Specification**

LYZL4 Antibody (Center) - Product Information

Application	WB,E
Primary Accession	O96KX0
Other Accession	NP_653235.1
Reactivity	Human
Host	Rabbit
Clonality	Polyclonal
Isotype	Rabbit IgG
Calculated MW	16433
Antigen Region	37-63

LYZL4 Antibody (Center) - Additional Information**Gene ID** 131375**Other Names**

Lysozyme-like protein 4, Lysozyme-4, LYZL4, LYC4

Target/Specificity

This LYZL4 antibody is generated from rabbits immunized with a KLH conjugated synthetic peptide between 37-63 amino acids from the Central region of human LYZL4.

Dilution

WB~~1:1000

E~~Use at an assay dependent concentration.

Format

Purified polyclonal antibody supplied in PBS with 0.09% (W/V) sodium azide. This antibody is purified through a protein A column, followed by peptide affinity purification.

Storage

Maintain refrigerated at 2-8°C for up to 2 weeks. For long term storage store at -20°C in small aliquots to prevent freeze-thaw cycles.

Precautions

LYZL4 Antibody (Center) is for research use only and not for use in diagnostic or therapeutic procedures.

LYZL4 Antibody (Center) - Protein Information**Name** LYZL4**Synonyms** LYC4

Function May be involved in fertilization (By similarity). Has no detectable bacteriolytic and lysozyme activities in vitro (By similarity).

Cellular Location

Secreted {ECO:0000250|UniProtKB:Q9D925}. Cytoplasmic vesicle, secretory vesicle, acrosome {ECO:0000250|UniProtKB:Q9D925}. Cell projection, cilium, flagellum {ECO:0000250|UniProtKB:Q9D925}. Note=Found in the principal piece of sperm tail. {ECO:0000250|UniProtKB:Q9D925}

Tissue Location

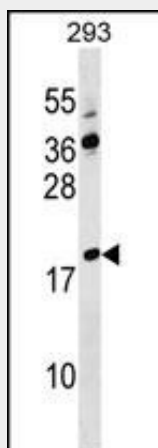
Expressed in testis and epididymis.

LYZL4 Antibody (Center) - Protocols

Provided below are standard protocols that you may find useful for product applications.

- [Western Blot](#)
- [Blocking Peptides](#)
- [Dot Blot](#)
- [Immunohistochemistry](#)
- [Immunofluorescence](#)
- [Immunoprecipitation](#)
- [Flow Cytometry](#)
- [Cell Culture](#)

LYZL4 Antibody (Center) - Images



LYZL4 Antibody (Center) (Cat. #AP18093c) western blot analysis in 293 cell line lysates (35ug/lane). This demonstrates the LYZL4 antibody detected the LYZL4 protein (arrow).

LYZL4 Antibody (Center) - Background

Lysozymes (see LYZ; MIM 153450), especially C-type lysozymes, are well-recognized bacteriolytic factors widely distributed in the animal kingdom and play a mainly protective role in host defense. LYZL4 is a member of a family of lysozyme-like genes (Zhang et al., 2005 [PubMed 16014814]).

LYZL4 Antibody (Center) - References

Lamesch, P., et al. Genomics 89(3):307-315(2007)
Zhang, K., et al. Biol. Reprod. 73(5):1064-1071(2005)