

MS4A6A Antibody (N-term)
Affinity Purified Rabbit Polyclonal Antibody (Pab)
Catalog # AP18100a**Specification**

MS4A6A Antibody (N-term) - Product Information

Application	WB,E
Primary Accession	O9H2W1
Other Accession	O96DS6 , NP_071744.2
Reactivity	Human
Host	Rabbit
Clonality	Polyclonal
Isotype	Rabbit IgG
Calculated MW	26943
Antigen Region	11-38

MS4A6A Antibody (N-term) - Additional Information**Gene ID** 64231**Other Names**

Membrane-spanning 4-domains subfamily A member 6A, CD20 antigen-like 3, Four-span transmembrane protein 3, MS4A6A, 4SPAN3, CD20L3, MS4A6

Target/Specificity

This MS4A6A antibody is generated from rabbits immunized with a KLH conjugated synthetic peptide between 11-38 amino acids from the N-terminal region of human MS4A6A.

Dilution

WB~~1:1000

E~~Use at an assay dependent concentration.

Format

Purified polyclonal antibody supplied in PBS with 0.09% (W/V) sodium azide. This antibody is purified through a protein A column, followed by peptide affinity purification.

Storage

Maintain refrigerated at 2-8°C for up to 2 weeks. For long term storage store at -20°C in small aliquots to prevent freeze-thaw cycles.

Precautions

MS4A6A Antibody (N-term) is for research use only and not for use in diagnostic or therapeutic procedures.

MS4A6A Antibody (N-term) - Protein Information**Name** MS4A6A

Synonyms 4SPAN3, CD20L3, MS4A6

Function May be involved in signal transduction as a component of a multimeric receptor complex.

Cellular Location

Membrane; Multi-pass membrane protein.

Tissue Location

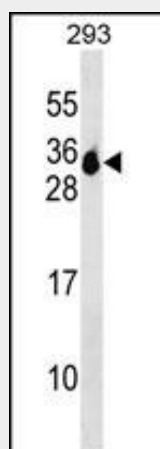
Variable expression in some B-cell, myelomonocytic, and erythroleukemia cell lines

MS4A6A Antibody (N-term) - Protocols

Provided below are standard protocols that you may find useful for product applications.

- [Western Blot](#)
- [Blocking Peptides](#)
- [Dot Blot](#)
- [Immunohistochemistry](#)
- [Immunofluorescence](#)
- [Immunoprecipitation](#)
- [Flow Cytometry](#)
- [Cell Culture](#)

MS4A6A Antibody (N-term) - Images



MS4A6A Antibody (N-term) (Cat. #AP18100a) western blot analysis in 293 cell line lysates (35ug/lane). This demonstrates the MS4A6A antibody detected the MS4A6A protein (arrow).

MS4A6A Antibody (N-term) - Background

This gene encodes a member of the membrane-spanning 4A gene family. Members of this nascent protein family are characterized by common structural features and similar intron/exon splice boundaries and display unique expression patterns among hematopoietic cells and nonlymphoid tissues. The gene encoding this protein is localized to 11q12.1, among a cluster of family members. Alternative splicing of this gene results in several transcript variants.

MS4A6A Antibody (N-term) - References

Liu, C.Y., et al. Carcinogenesis 31(7):1259-1263(2010)
Davila, S., et al. Genes Immun. 11(3):232-238(2010)
Liang, Y., et al. Immunogenetics 53(5):357-368(2001)
Liang, Y., et al. Genomics 72(2):119-127(2001)
Ishibashi, K., et al. Gene 264(1):87-93(2001)