

**MTL5 Antibody (C-term)**  
**Affinity Purified Rabbit Polyclonal Antibody (Pab)**  
**Catalog # AP18102b****Specification**

---

**MTL5 Antibody (C-term) - Product Information**

Application	WB,E
Primary Accession	<a href="#">Q9Y4I5</a>
Other Accession	<a href="#">NP_001034745.1</a>
Reactivity	Human
Host	Rabbit
Clonality	Polyclonal
Isotype	Rabbit IgG
Calculated MW	55025
Antigen Region	341-368

**MTL5 Antibody (C-term) - Additional Information****Gene ID** 9633**Other Names**

Tesmin, Metallothionein-like 5, testis-specific, Testis-specific metallothionein-like protein, MTL5

**Target/Specificity**

This MTL5 antibody is generated from rabbits immunized with a KLH conjugated synthetic peptide between 341-368 amino acids from the C-terminal region of human MTL5.

**Dilution**

WB~~1:1000

E~~Use at an assay dependent concentration.

**Format**

Purified polyclonal antibody supplied in PBS with 0.09% (W/V) sodium azide. This antibody is purified through a protein A column, followed by peptide affinity purification.

**Storage**

Maintain refrigerated at 2-8°C for up to 2 weeks. For long term storage store at -20°C in small aliquots to prevent freeze-thaw cycles.

**Precautions**

MTL5 Antibody (C-term) is for research use only and not for use in diagnostic or therapeutic procedures.

**MTL5 Antibody (C-term) - Protein Information****Name** TESMIN ([HGNC:7446](#))**Synonyms** MTL5

**Function** Essential for normal spermatogenesis and male fertility (By similarity). Required for the completion of meiosis in male germ cells (By similarity).

**Cellular Location**

Cytoplasm {ECO:0000250|UniProtKB:Q9WTJ6}. Nucleus {ECO:0000250|UniProtKB:Q9WTJ6}.

Note=Predominantly localized to the cytoplasm. Translocates from the cytoplasm to the nucleus in the G2/M transition upon treatment with cadmium, cobalt or zinc {ECO:0000250|UniProtKB:Q9WTJ6}

**Tissue Location**

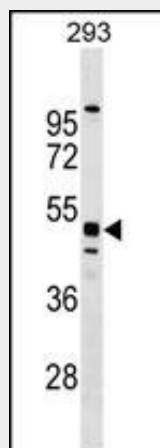
Expressed specifically in testis.

**MTL5 Antibody (C-term) - Protocols**

Provided below are standard protocols that you may find useful for product applications.

- [Western Blot](#)
- [Blocking Peptides](#)
- [Dot Blot](#)
- [Immunohistochemistry](#)
- [Immunofluorescence](#)
- [Immunoprecipitation](#)
- [Flow Cytometry](#)
- [Cell Culture](#)

**MTL5 Antibody (C-term) - Images**



MTL5 Antibody (C-term) (Cat. #AP18102b) western blot analysis in 293 cell line lysates (35ug/lane). This demonstrates the MTL5 antibody detected the MTL5 protein (arrow).

**MTL5 Antibody (C-term) - Background**

Metallothionein proteins are highly conserved low-molecular-weight cysteine-rich proteins that are induced by and bind to heavy metal ions and have no enzymatic activity. They may play a central role in the regulation of cell growth and differentiation and are involved in spermatogenesis. This gene encodes a metallothionein-like protein which has been shown to be expressed differentially in mouse testis and ovary. Two transcript variants encoding different isoforms have been found for this gene.

**MTL5 Antibody (C-term) - References**

Oh, J.H., et al. Mamm. Genome 16(12):942-954(2005)  
Olesen, C., et al. Mol. Reprod. Dev. 67(1):116-126(2004)  
Sutou, S., et al. Biol. Reprod. 68(5):1861-1869(2003)  
Matsuura, T., et al. J. Inorg. Biochem. 88(2):183-191(2002)  
Sugihara, T., et al. Genomics 57(1):130-136(1999)