

SIK2 Antibody (Center)
Affinity Purified Rabbit Polyclonal Antibody (Pab)
Catalog # AP18127c

Specification

SIK2 Antibody (Center) - Product Information

Application	WB,E
Primary Accession	O9H0K1
Other Accession	O8CFH6 , NP_056006.1
Reactivity	Human
Predicted	Mouse
Host	Rabbit
Clonality	Polyclonal
Isotype	Rabbit IgG
Calculated MW	103915
Antigen Region	332-358

SIK2 Antibody (Center) - Additional Information

Gene ID 23235

Other Names

Serine/threonine-protein kinase SIK2, Qin-induced kinase, Salt-inducible kinase 2, SIK-2, Serine/threonine-protein kinase SNF1-like kinase 2, SIK2

Target/Specificity

This SIK2 antibody is generated from rabbits immunized with a KLH conjugated synthetic peptide between 332-358 amino acids from the Central region of human SIK2.

Dilution

WB~~1:1000

E~~Use at an assay dependent concentration.

Format

Purified polyclonal antibody supplied in PBS with 0.09% (W/V) sodium azide. This antibody is purified through a protein A column, followed by peptide affinity purification.

Storage

Maintain refrigerated at 2-8°C for up to 2 weeks. For long term storage store at -20°C in small aliquots to prevent freeze-thaw cycles.

Precautions

SIK2 Antibody (Center) is for research use only and not for use in diagnostic or therapeutic procedures.

SIK2 Antibody (Center) - Protein Information

Name SIK2

Synonyms KIAA0781 {ECO:0000312|EMBL:BAA34501.3},

Function Serine/threonine-protein kinase that plays a role in many biological processes such as fatty acid oxidation, autophagy, immune response or glucose metabolism (PubMed:[23322770](#), PubMed:[26983400](#)). Phosphorylates 'Ser-794' of IRS1 in insulin-stimulated adipocytes, potentially modulating the efficiency of insulin signal transduction. Inhibits CREB activity by phosphorylating and repressing TORCs, the CREB-specific coactivators (PubMed:[15454081](#)). Phosphorylates EP300 and thus inhibits its histone acetyltransferase activity (PubMed:[21084751](#), PubMed:[26983400](#)). In turn, regulates the DNA-binding ability of several transcription factors such as PPARA or MLXIPL (PubMed:[21084751](#), PubMed:[26983400](#)). Also plays a role in thymic T-cell development (By similarity).

Cellular Location

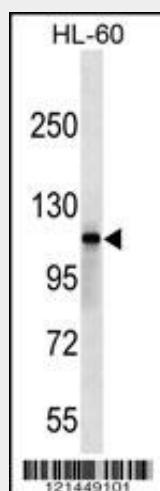
Cytoplasm. Endoplasmic reticulum membrane

SIK2 Antibody (Center) - Protocols

Provided below are standard protocols that you may find useful for product applications.

- [Western Blot](#)
- [Blocking Peptides](#)
- [Dot Blot](#)
- [Immunohistochemistry](#)
- [Immunofluorescence](#)
- [Immunoprecipitation](#)
- [Flow Cytometry](#)
- [Cell Culture](#)

SIK2 Antibody (Center) - Images



SIK2 Antibody (Center) (Cat. #AP18127c) western blot analysis in HL-60 cell line lysates (35ug/lane). This demonstrates the SIK2 antibody detected the SIK2 protein (arrow).

SIK2 Antibody (Center) - Background

Phosphorylates 'Ser-794' of IRS1 in insulin-stimulated adipocytes, potentially modulating the efficiency of insulin signal transduction. Inhibits CREB activity by phosphorylating and repressing TORCs, the CREB-specific coactivators.

SIK2 Antibody (Center) - References

Ahmed, A.A., et al. Cancer Cell 18(2):109-121(2010)
Rose, J.E., et al. Mol. Med. 16 (7-8), 247-253 (2010) :
Nagel, S., et al. Leuk. Lymphoma 51(5):881-891(2010)
Wang, A.G., et al. Biochem. Biophys. Res. Commun. 345(3):1022-1032(2006)
Katoh, Y., et al. Eur. J. Biochem. 271(21):4307-4319(2004)