

IFNA1 Antibody (C-term)
Affinity Purified Rabbit Polyclonal Antibody (Pab)
Catalog # AP18129b**Specification**

IFNA1 Antibody (C-term) - Product Information

Application	WB, FC,E
Primary Accession	P01562
Other Accession	NP_008831.3
Reactivity	Human
Host	Rabbit
Clonality	Polyclonal
Isotype	Rabbit IgG
Antigen Region	164-189

IFNA1 Antibody (C-term) - Additional Information**Gene ID** 3439;3447**Other Names**

Interferon alpha-1/13, IFN-alpha-1/13, Interferon alpha-D, LeIF D, IFNA1

Target/Specificity

This IFNA1 antibody is generated from rabbits immunized with a KLH conjugated synthetic peptide between 164-189 amino acids from the C-terminal region of human IFNA1.

Dilution

WB~~1:2000

FC~~1:25

E~~Use at an assay dependent concentration.

Format

Purified polyclonal antibody supplied in PBS with 0.09% (W/V) sodium azide. This antibody is purified through a protein A column, followed by peptide affinity purification.

Storage

Maintain refrigerated at 2-8°C for up to 2 weeks. For long term storage store at -20°C in small aliquots to prevent freeze-thaw cycles.

Precautions

IFNA1 Antibody (C-term) is for research use only and not for use in diagnostic or therapeutic procedures.

IFNA1 Antibody (C-term) - Protein Information**Name** IFNA1**Function** Produced by macrophages, IFN-alpha have antiviral activities. Interferon stimulates the

production of two enzymes: a protein kinase and an oligoadenylate synthetase.

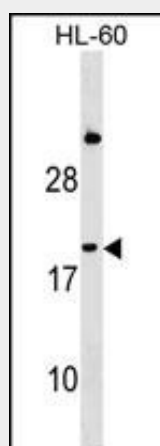
Cellular Location
Secreted.

IFNA1 Antibody (C-term) - Protocols

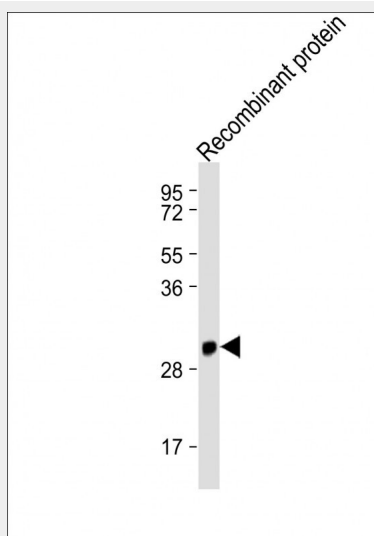
Provided below are standard protocols that you may find useful for product applications.

- [Western Blot](#)
- [Blocking Peptides](#)
- [Dot Blot](#)
- [Immunohistochemistry](#)
- [Immunofluorescence](#)
- [Immunoprecipitation](#)
- [Flow Cytometry](#)
- [Cell Culture](#)

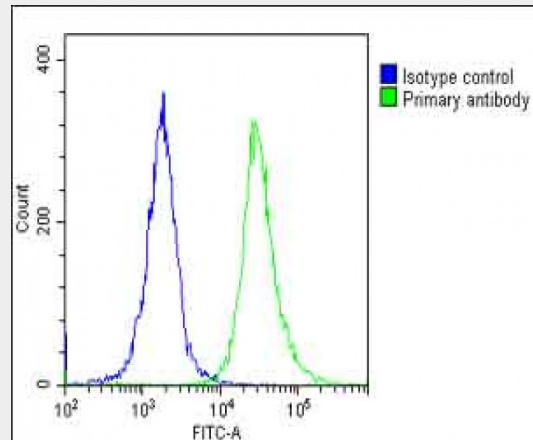
IFNA1 Antibody (C-term) - Images



IFNA1 Antibody (C-term) (Cat. #AP18129b) western blot analysis in HL-60 cell line lysates (35ug/lane). This demonstrates the IFNA1 antibody detected the IFNA1 protein (arrow).



Anti-IFNA1 Antibody (C-term) at 1:2000 dilution + Recombinant protein Lysates/proteins at 20ng per lane. Secondary Goat Anti-Rabbit IgG, (H+L), Peroxidase conjugated at 1/10000 dilution. Predicted band size : 22 kDa Blocking/Dilution buffer: 5% NFDM/TBST.



Overlay histogram showing Hela cells stained with AP18129b(green line). The cells were fixed with 2% paraformaldehyde (10 min) and then permeabilized with 90% methanol for 10 min. The cells were then incubated in 2% bovine serum albumin to block non-specific protein-protein interactions followed by the antibody (AP18129b, 1:25 dilution) for 60 min at 37°C. The secondary antibody used was Goat-Anti-Rabbit IgG, DyLight® 488 Conjugated Highly Cross-Adsorbed(1583138) at 1/200 dilution for 40 min at 37°C. Isotype control antibody (blue line) was rabbit IgG1 (1µg/1x10⁶ cells) used under the same conditions. Acquisition of >10, 000 events was performed.

IFNA1 Antibody (C-term) - Background

IFNA1 is produced by macrophages, IFN-alpha have antiviral activities. Interferon stimulates the production of two enzymes: a protein kinase and an oligoadenylate synthetase.

IFNA1 Antibody (C-term) - References

- Silva, L.K., et al. Eur. J. Hum. Genet. 18(11):1221-1227(2010)
- Schuurhof, A., et al. Pediatr. Pulmonol. 45(6):608-613(2010)
- Davila, S., et al. Genes Immun. 11(3):232-238(2010)
- Siezen, C.L., et al. Pediatr. Infect. Dis. J. 28(4):333-335(2009)
- Janssen, R., et al. J. Infect. Dis. 196(6):826-834(2007)