

**KLF15 Antibody (C-term)**  
**Affinity Purified Rabbit Polyclonal Antibody (Pab)**  
**Catalog # AP18136b****Specification**

---

**KLF15 Antibody (C-term) - Product Information**

Application	WB,E
Primary Accession	<a href="#">O9UIH9</a>
Other Accession	<a href="#">O9EPW2</a> , <a href="#">NP_054798.1</a>
Reactivity	Human
Predicted	Mouse
Host	Rabbit
Clonality	Polyclonal
Isotype	Rabbit IgG
Calculated MW	43992
Antigen Region	372-398

**KLF15 Antibody (C-term) - Additional Information****Gene ID** 28999**Other Names**

Krueppel-like factor 15, Kidney-enriched krueppel-like factor, KLF15, KKLf

**Target/Specificity**

This KLF15 antibody is generated from rabbits immunized with a KLH conjugated synthetic peptide between 372-398 amino acids from the C-terminal region of human KLF15.

**Dilution**

WB~~1:1000

E~~Use at an assay dependent concentration.

**Format**

Purified polyclonal antibody supplied in PBS with 0.09% (W/V) sodium azide. This antibody is purified through a protein A column, followed by peptide affinity purification.

**Storage**

Maintain refrigerated at 2-8°C for up to 2 weeks. For long term storage store at -20°C in small aliquots to prevent freeze-thaw cycles.

**Precautions**

KLF15 Antibody (C-term) is for research use only and not for use in diagnostic or therapeutic procedures.

**KLF15 Antibody (C-term) - Protein Information****Name** KLF15

**Synonyms** KCLF

**Function** Transcriptional regulator that binds to the GA element of the CLCNKA promoter. Binds to the KCNIP2 promoter and regulates KCNIP2 circadian expression in the heart (By similarity). Is a repressor of CEN2 expression, involved in the control of cardiac fibrosis. It is also involved in the control of cardiac hypertrophy acting through the inhibition of MEF2A and GATA4 (By similarity). Involved in podocyte differentiation (By similarity). Inhibits MYOCD activity. Is a negative regulator of TP53 acetylation. Inhibits NF-kappa-B activation through repression of EP300-dependent RELA acetylation.

**Cellular Location**

Nucleus

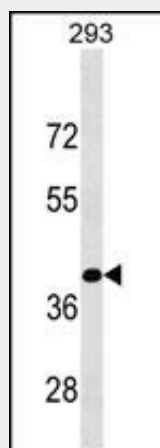
**Tissue Location**

Highly expressed in liver, skeletal muscle, and kidney. Expressed in cardiomyocytes. Expression is highly reduced in cardiac tissue of patients with non-ischemic cardiomyopathy and aortic aneurysm, and in glomerular disease. Not expressed in bone marrow or lymphoid tissues.

**KLF15 Antibody (C-term) - Protocols**

Provided below are standard protocols that you may find useful for product applications.

- [Western Blot](#)
- [Blocking Peptides](#)
- [Dot Blot](#)
- [Immunohistochemistry](#)
- [Immunofluorescence](#)
- [Immunoprecipitation](#)
- [Flow Cytometry](#)
- [Cell Culture](#)

**KLF15 Antibody (C-term) - Images**

KLF15 Antibody (C-term) (Cat. #AP18136b) western blot analysis in 293 cell line lysates (35ug/lane). This demonstrates the KLF15 antibody detected the KLF15 protein (arrow).

**KLF15 Antibody (C-term) - Background**

KLF15 is a transcriptional activator. Binds to the GA element of the CLCNKA promoter.

**KLF15 Antibody (C-term) - References**

Yamamoto, K., et al. Biochem. Biophys. Res. Commun. 400(1):175-180(2010)  
Haldar, S.M., et al. Sci Transl Med 2 (26), 26RA26 (2010) :  
Li, J., et al. BMC Genet. 11, 12 (2010) :  
Du, X., et al. J. Clin. Endocrinol. Metab. 94(7):2594-2601(2009)  
Wang, B., et al. J. Mol. Cell. Cardiol. 45(2):193-197(2008)