

RCSD1 Antibody (Center)
Affinity Purified Rabbit Polyclonal Antibody (Pab)
Catalog # AP18141C**Specification**

RCSD1 Antibody (Center) - Product Information

Application	WB,E
Primary Accession	Q6JBY9
Other Accession	NP_443094.3
Reactivity	Human
Host	Rabbit
Clonality	Polyclonal
Isotype	Rabbit IgG
Calculated MW	44504
Antigen Region	237-266

RCSD1 Antibody (Center) - Additional Information**Gene ID** 92241**Other Names**

CapZ-interacting protein, Protein kinase substrate CapZIP, RCSD domain-containing protein 1, RCSD1, CAPZIP

Target/Specificity

This RCSD1 antibody is generated from rabbits immunized with a KLH conjugated synthetic peptide between 237-266 amino acids from the Central region of human RCSD1.

Dilution

WB~~1:1000

Format

Purified polyclonal antibody supplied in PBS with 0.09% (W/V) sodium azide. This antibody is purified through a protein A column, followed by peptide affinity purification.

Storage

Maintain refrigerated at 2-8°C for up to 2 weeks. For long term storage store at -20°C in small aliquots to prevent freeze-thaw cycles.

Precautions

RCSD1 Antibody (Center) is for research use only and not for use in diagnostic or therapeutic procedures.

RCSD1 Antibody (Center) - Protein Information**Name** RCSD1**Synonyms** CAPZIP

Function Stress-induced phosphorylation of CAPZIP may regulate the ability of F-actin-capping protein to remodel actin filament assembly.

Tissue Location

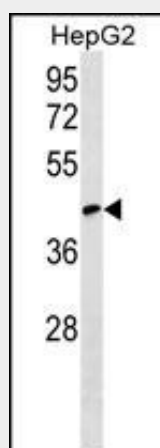
Highly expressed in skeletal muscle and more weakly in cardiac muscle. Also expressed in several lymphoid organs, including spleen, thymus, peripheral blood leukocytes, lymph node and bone marrow.

RCSD1 Antibody (Center) - Protocols

Provided below are standard protocols that you may find useful for product applications.

- [Western Blot](#)
- [Blocking Peptides](#)
- [Dot Blot](#)
- [Immunohistochemistry](#)
- [Immunofluorescence](#)
- [Immunoprecipitation](#)
- [Flow Cytometry](#)
- [Cell Culture](#)

RCSD1 Antibody (Center) - Images



RCSD1 Antibody (Center) (Cat. #AP18141c) western blot analysis in HepG2 cell line lysates (35ug/lane). This demonstrates the RCSD1 antibody detected the RCSD1 protein (arrow).

RCSD1 Antibody (Center) - Background

Stress-induced phosphorylation of CAPZIP may regulate the ability of F-actin-capping protein to remodel actin filament assembly.

RCSD1 Antibody (Center) - References

Ehret, G.B., et al. Eur. J. Hum. Genet. 17(12):1650-1657(2009)
Cheung, C.L., et al. Hum. Mol. Genet. 18(4):679-687(2009)
De Braekeleer, E., et al. Leukemia 21(10):2220-2221(2007)
Eyers, C.E., et al. Biochem. J. 389 (PT 1), 127-135 (2005) :