

**AFF2 Antibody (Center)**  
**Affinity Purified Rabbit Polyclonal Antibody (Pab)**  
**Catalog # AP18150c****Specification**

---

**AFF2 Antibody (Center) - Product Information**

Application	WB,E
Primary Accession	<a href="#">P51816</a>
Other Accession	<a href="#">NP_001162593.1</a>
Reactivity	Human
Host	Rabbit
Clonality	Polyclonal
Isotype	Rabbit IgG
Calculated MW	144771
Antigen Region	886-912

**AFF2 Antibody (Center) - Additional Information****Gene ID** 2334**Other Names**

AF4/FMR2 family member 2, Fragile X E mental retardation syndrome protein, Fragile X mental retardation 2 protein, FMR2P, Protein FMR-2, Protein Ox19, AFF2, FMR2, OX19

**Target/Specificity**

This AFF2 antibody is generated from rabbits immunized with a KLH conjugated synthetic peptide between 886-912 amino acids from the Central region of human AFF2.

**Dilution**

WB~~1:1000

**Format**

Purified polyclonal antibody supplied in PBS with 0.09% (W/V) sodium azide. This antibody is purified through a protein A column, followed by peptide affinity purification.

**Storage**

Maintain refrigerated at 2-8°C for up to 2 weeks. For long term storage store at -20°C in small aliquots to prevent freeze-thaw cycles.

**Precautions**

AFF2 Antibody (Center) is for research use only and not for use in diagnostic or therapeutic procedures.

**AFF2 Antibody (Center) - Protein Information****Name** AFF2 ([HGNC:3776](#))**Synonyms** FMR2, OX19

**Function** RNA-binding protein. Might be involved in alternative splicing regulation through an interaction with G-quartet RNA structure.

**Cellular Location**

Nucleus speckle. Note=When splicing is inhibited, accumulates in enlarged speckles

**Tissue Location**

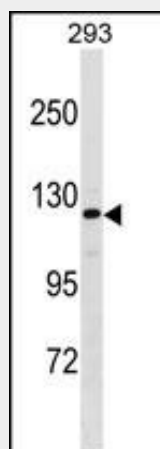
Brain (most abundant in hippocampus and amygdala), placenta and lung

**AFF2 Antibody (Center) - Protocols**

Provided below are standard protocols that you may find useful for product applications.

- [Western Blot](#)
- [Blocking Peptides](#)
- [Dot Blot](#)
- [Immunohistochemistry](#)
- [Immunofluorescence](#)
- [Immunoprecipitation](#)
- [Flow Cytometry](#)
- [Cell Culture](#)

**AFF2 Antibody (Center) - Images**



AFF2 Antibody (Center) (Cat. #AP18150c) western blot analysis in 293 cell line lysates (35ug/lane). This demonstrates the AFF2 antibody detected the AFF2 protein (arrow).

**AFF2 Antibody (Center) - Background**

This gene encodes a putative transcriptional activator that is a member of the AF4FMR2 gene family. This gene is associated with the folate-sensitive fragile X E locus on chromosome X. A repeat polymorphism in the fragile X E locus results in silencing of this gene causing Fragile X E syndrome. Fragile X E syndrome is a form of nonsyndromic X-linked mental retardation. Alternate splicing results in multiple transcript variants.

**AFF2 Antibody (Center) - References**

Bensaid, M., et al. Nucleic Acids Res. 37(4):1269-1279(2009)  
Brylawski, B.P., et al. Exp. Mol. Pathol. 82(2):190-196(2007)  
Sharma, D., et al. Genet. Epidemiol. 20(1):129-144(2001)  
Hillman, M.A., et al. J. Hum. Genet. 46(5):251-259(2001)  
Musumeci, S.A., et al. Clin Neurophysiol 111(9):1632-1636(2000)