

CC113 Antibody (C-term)
Affinity Purified Rabbit Polyclonal Antibody (Pab)
Catalog # AP18163b**Specification**

CC113 Antibody (C-term) - Product Information

Application	WB,E
Primary Accession	O9H0I3
Other Accession	NP_001135774.1
Reactivity	Human
Host	Rabbit
Clonality	Polyclonal
Isotype	Rabbit IgG
Calculated MW	44220
Antigen Region	291-320

CC113 Antibody (C-term) - Additional Information**Gene ID** 29070**Other Names**

Coiled-coil domain-containing protein 113, CCDC113

Target/Specificity

This CC113 antibody is generated from rabbits immunized with a KLH conjugated synthetic peptide between 291-320 amino acids from the C-terminal region of human CC113.

Dilution

WB~~1:1000

E~~Use at an assay dependent concentration.

Format

Purified polyclonal antibody supplied in PBS with 0.09% (W/V) sodium azide. This antibody is purified through a protein A column, followed by peptide affinity purification.

Storage

Maintain refrigerated at 2-8°C for up to 2 weeks. For long term storage store at -20°C in small aliquots to prevent freeze-thaw cycles.

Precautions

CC113 Antibody (C-term) is for research use only and not for use in diagnostic or therapeutic procedures.

CC113 Antibody (C-term) - Protein Information**Name** CFAP263 ([HGNC:25002](#))**Synonyms** CCDC113

Function Component of centriolar satellites contributing to primary cilium formation (PubMed:[25074808](#)). In complex with CFAP263, acts as a regulator of ciliary beating that connects radial spoke 3 (RS3) to the inner dynein arm (IDA) and the nexin-dynein regulatory complex (N-DRC). The complex is positioned parallel to N-DRC and forms a connection between the arch at the base of RS3, the IDA tail and N-DRC (By similarity).

Cellular Location

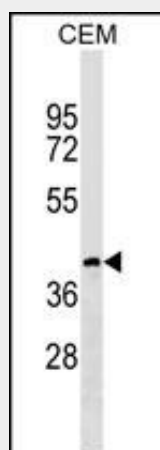
Cytoplasm, cytoskeleton, microtubule organizing center, centrosome, centriolar satellite Cell projection, cilium {ECO:0000250|UniProtKB:Q22KK0} Note=Colocalized with HAP1 at centriolar satellites. Centriolar satellite localization requires PCM1 (PubMed:25074808). Localizes at cilium but not at the ciliary tips (By similarity) {ECO:0000250|UniProtKB:Q22KK0, ECO:0000269|PubMed:25074808}

CC113 Antibody (C-term) - Protocols

Provided below are standard protocols that you may find useful for product applications.

- [Western Blot](#)
- [Blocking Peptides](#)
- [Dot Blot](#)
- [Immunohistochemistry](#)
- [Immunofluorescence](#)
- [Immunoprecipitation](#)
- [Flow Cytometry](#)
- [Cell Culture](#)

CC113 Antibody (C-term) - Images



CC113 Antibody (C-term) (Cat. #AP18163b) western blot analysis in CEM cell line lysates (35ug/lane). This demonstrates the CC113 antibody detected the CC113 protein (arrow).

CC113 Antibody (C-term) - Background

The function of this protein remains unknown.

CC113 Antibody (C-term) - References

Simpson, J.C., et al. EMBO Rep. 1(3):287-292(2000)