

MMD2 Antibody (N-term)
Affinity Purified Rabbit Polyclonal Antibody (Pab)
Catalog # AP18167a**Specification**

MMD2 Antibody (N-term) - Product Information

Application	WB,E
Primary Accession	Q8IY49
Other Accession	Q8R189 , NP_001094070.1
Reactivity	Human, Mouse
Host	Rabbit
Clonality	Polyclonal
Isotype	Rabbit IgG
Calculated MW	31264
Antigen Region	6-35

MMD2 Antibody (N-term) - Additional Information**Gene ID** 221938**Other Names**

Monocyte to macrophage differentiation factor 2, Progestin and adipoQ receptor family member 10, Progestin and adipoQ receptor family member X, MMD2, PAQR10

Target/Specificity

This MMD2 antibody is generated from rabbits immunized with a KLH conjugated synthetic peptide between 6-35 amino acids from the N-terminal region of human MMD2.

Dilution

WB~~1:1000

E~~Use at an assay dependent concentration.

Format

Purified polyclonal antibody supplied in PBS with 0.09% (W/V) sodium azide. This antibody is purified through a protein A column, followed by peptide affinity purification.

Storage

Maintain refrigerated at 2-8°C for up to 2 weeks. For long term storage store at -20°C in small aliquots to prevent freeze-thaw cycles.

Precautions

MMD2 Antibody (N-term) is for research use only and not for use in diagnostic or therapeutic procedures.

MMD2 Antibody (N-term) - Protein Information**Name** MMD2 ([HGNC:30133](#))

Cellular Location

Golgi apparatus membrane; Multi-pass membrane protein

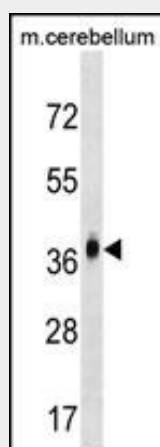
Tissue Location

Shows restricted expression with highest levels in brain and testis.

MMD2 Antibody (N-term) - Protocols

Provided below are standard protocols that you may find useful for product applications.

- [Western Blot](#)
- [Blocking Peptides](#)
- [Dot Blot](#)
- [Immunohistochemistry](#)
- [Immunofluorescence](#)
- [Immunoprecipitation](#)
- [Flow Cytometry](#)
- [Cell Culture](#)

MMD2 Antibody (N-term) - Images

MMD2 Antibody (N-term) (Cat. #AP18167a) western blot analysis in mouse cerebellum tissue lysates (35ug/lane). This demonstrates the MMD2 antibody detected the MMD2 protein (arrow).

MMD2 Antibody (N-term) - Background

MMD2 is a homologue of MMD and both proteins are members of the so far uncharacterized Hemolysin-III (Hly-III) family, and are atypical members of the PAQR family. PAQR10/MMD2, has recently (G

MMD2 Antibody (N-term) - References

McGovern, D.P., et al. Hum. Mol. Genet. 19(17):3468-3476(2010)
Rose, J.E., et al. Mol. Med. 16 (7-8), 247-253 (2010) :
Davila, S., et al. Genes Immun. 11(3):232-238(2010)
Trynka, G., et al. Gut 58(8):1078-1083(2009)
Tang, Y.T., et al. J. Mol. Evol. 61(3):372-380(2005)