

**TFG Antibody (Center)**  
**Affinity Purified Rabbit Polyclonal Antibody (Pab)**  
**Catalog # AP18173c****Specification**

---

**TFG Antibody (Center) - Product Information**

Application	WB,E
Primary Accession	<a href="#">O92734</a>
Other Accession	<a href="#">NP_001007566.1</a>
Reactivity	Human
Host	Rabbit
Clonality	Polyclonal
Isotype	Rabbit IgG
Calculated MW	43448
Antigen Region	85-114

**TFG Antibody (Center) - Additional Information****Gene ID** 10342**Other Names**

Protein TFG, TRK-fused gene protein, TFG

**Target/Specificity**

This TFG antibody is generated from rabbits immunized with a KLH conjugated synthetic peptide between 85-114 amino acids from the Central region of human TFG.

**Dilution**

WB~~1:1000

E~~Use at an assay dependent concentration.

**Format**

Purified polyclonal antibody supplied in PBS with 0.09% (W/V) sodium azide. This antibody is purified through a protein A column, followed by peptide affinity purification.

**Storage**

Maintain refrigerated at 2-8°C for up to 2 weeks. For long term storage store at -20°C in small aliquots to prevent freeze-thaw cycles.

**Precautions**

TFG Antibody (Center) is for research use only and not for use in diagnostic or therapeutic procedures.

**TFG Antibody (Center) - Protein Information****Name** TFG**Function** Plays a role in the normal dynamic function of the endoplasmic reticulum (ER) and its

associated microtubules (PubMed:[23479643](#), PubMed:[27813252](#)). Required for secretory cargo traffic from the endoplasmic reticulum to the Golgi apparatus (PubMed:[21478858](#)).

#### Cellular Location

Endoplasmic reticulum. Note=Localizes to endoplasmic reticulum exit site (ERES), also known as transitional endoplasmic reticulum (tER) (PubMed:21478858, PubMed:27813252).

#### Tissue Location

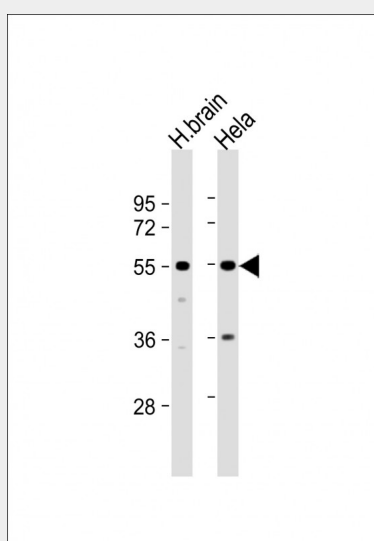
Ubiquitous.

### TFG Antibody (Center) - Protocols

Provided below are standard protocols that you may find useful for product applications.

- [Western Blot](#)
- [Blocking Peptides](#)
- [Dot Blot](#)
- [Immunohistochemistry](#)
- [Immunofluorescence](#)
- [Immunoprecipitation](#)
- [Flow Cytometry](#)
- [Cell Culture](#)

### TFG Antibody (Center) - Images



All lanes : Anti-TFG Antibody (Center) at 1:1000 dilution Lane 1: human brain lysate Lane 2: HeLa whole cell lysate Lysates/proteins at 20 µg per lane. Secondary Goat Anti-Rabbit IgG, (H+L), Peroxidase conjugated at 1/10000 dilution. Predicted band size : 43 kDa Blocking/Dilution buffer: 5% NFD/MTBST.

### TFG Antibody (Center) - Background

There are several documented fusion oncoproteins encoded partially by this gene. This gene also participates in several oncogenic rearrangements resulting in anaplastic lymphoma and mixoid chondrosarcoma, and may play a role in the NF-kappaB pathway. Multiple transcript variants have been found for this

gene.

#### **TFG Antibody (Center) - References**

Miranda, C., et al. J. Cell. Physiol. 208(1):154-160(2006)  
Roccato, E., et al. J. Biol. Chem. 280(5):3382-3389(2005)  
Hisaoaka, M., et al. Genes Chromosomes Cancer 40(4):325-328(2004)  
Roccato, E., et al. Br. J. Cancer 87(6):645-653(2002)  
Hernandez, L., et al. Am. J. Pathol. 160(4):1487-1494(2002)