

LINS1 Antibody (C-term)
Affinity Purified Rabbit Polyclonal Antibody (Pab)
Catalog # AP18175B**Specification**

LINS1 Antibody (C-term) - Product Information

Application	WB,E
Primary Accession	Q8NG48
Other Accession	NP_001035706.1
Reactivity	Human
Host	Rabbit
Clonality	Polyclonal
Isotype	Rabbit IgG
Calculated MW	85857
Antigen Region	643-672

LINS1 Antibody (C-term) - Additional Information**Gene ID** 55180**Other Names**

Protein Lines homolog, Protein Lines homolog 1, Wnt-signaling molecule Lines homolog 1, LINS, LINS1, WINS1

Target/Specificity

This LINS1 antibody is generated from rabbits immunized with a KLH conjugated synthetic peptide between 643-672 amino acids from the C-terminal region of human LINS1.

Dilution

WB~~1:1000

E~~Use at an assay dependent concentration.

Format

Purified polyclonal antibody supplied in PBS with 0.09% (W/V) sodium azide. This antibody is purified through a protein A column, followed by peptide affinity purification.

Storage

Maintain refrigerated at 2-8°C for up to 2 weeks. For long term storage store at -20°C in small aliquots to prevent freeze-thaw cycles.

Precautions

LINS1 Antibody (C-term) is for research use only and not for use in diagnostic or therapeutic procedures.

LINS1 Antibody (C-term) - Protein Information**Name** LINS1 ([HGNC:30922](#))

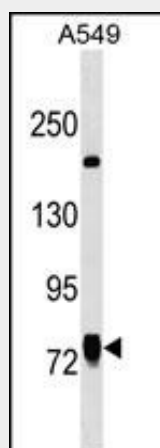
Tissue Location

Expressed in adult testis, prostate, prostate, spleen, thymus, skeletal muscle, fetal kidney and brain

LINS1 Antibody (C-term) - Protocols

Provided below are standard protocols that you may find useful for product applications.

- [Western Blot](#)
- [Blocking Peptides](#)
- [Dot Blot](#)
- [Immunohistochemistry](#)
- [Immunofluorescence](#)
- [Immunoprecipitation](#)
- [Flow Cytometry](#)
- [Cell Culture](#)

LINS1 Antibody (C-term) - Images

LINS1 Antibody (C-term) (Cat. #AP18175b) western blot analysis in A549 cell line lysates (35ug/lane). This demonstrates the LINS1 antibody detected the LINS1 protein (arrow).

LINS1 Antibody (C-term) - Background

The function of this protein remains unknown.