

MS4A14 Antibody (C-term)
Affinity Purified Rabbit Polyclonal Antibody (Pab)
Catalog # AP18177b**Specification**

MS4A14 Antibody (C-term) - Product Information

Application	WB,E
Primary Accession	O96JA4
Other Accession	NP_001073160.1
Reactivity	Human
Host	Rabbit
Clonality	Polyclonal
Isotype	Rabbit IgG
Calculated MW	76580
Antigen Region	556-585

MS4A14 Antibody (C-term) - Additional Information**Gene ID** 84689**Other Names**

Membrane-spanning 4-domains subfamily A member 14, Testis development protein NYD-SP21, MS4A14, MS4A13, MS4A16

Target/Specificity

This MS4A14 antibody is generated from rabbits immunized with a KLH conjugated synthetic peptide between 556-585 amino acids from the C-terminal region of human MS4A14.

Dilution

WB~~1:1000

E~~Use at an assay dependent concentration.

Format

Purified polyclonal antibody supplied in PBS with 0.09% (W/V) sodium azide. This antibody is purified through a protein A column, followed by peptide affinity purification.

Storage

Maintain refrigerated at 2-8°C for up to 2 weeks. For long term storage store at -20°C in small aliquots to prevent freeze-thaw cycles.

Precautions

MS4A14 Antibody (C-term) is for research use only and not for use in diagnostic or therapeutic procedures.

MS4A14 Antibody (C-term) - Protein Information**Name** MS4A14

Synonyms MS4A13, MS4A16

Function May be involved in signal transduction as a component of a multimeric receptor complex.

Cellular Location

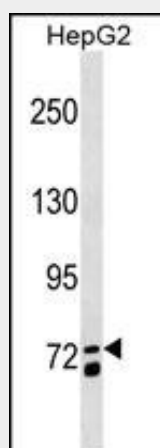
Membrane; Multi-pass membrane protein

MS4A14 Antibody (C-term) - Protocols

Provided below are standard protocols that you may find useful for product applications.

- [Western Blot](#)
- [Blocking Peptides](#)
- [Dot Blot](#)
- [Immunohistochemistry](#)
- [Immunofluorescence](#)
- [Immunoprecipitation](#)
- [Flow Cytometry](#)
- [Cell Culture](#)

MS4A14 Antibody (C-term) - Images



MS4A14 Antibody (C-term) (Cat. #AP18177b) western blot analysis in HepG2 cell line lysates (35ug/lane). This demonstrates the MS4A14 antibody detected the MS4A14 protein (arrow).

MS4A14 Antibody (C-term) - Background

MS4A14 may be involved in signal transduction as a component of a multimeric receptor complex (By similarity).

MS4A14 Antibody (C-term) - References

Davila, S., et al. Genes Immun. 11(3):232-238(2010)
Kim, B.Y., et al. J. Biol. Chem. 276(31):29393-29402(2001)