

**SS18L1 Antibody (Center)**  
**Affinity Purified Rabbit Polyclonal Antibody (Pab)**  
**Catalog # AP18184c****Specification**

---

**SS18L1 Antibody (Center) - Product Information**

Application	WB,E
Primary Accession	<a href="#">O75177</a>
Other Accession	<a href="#">NP_945173.1</a>
Reactivity	Human
Host	Rabbit
Clonality	Polyclonal
Isotype	Rabbit IgG
Calculated MW	42990
Antigen Region	272-300

**SS18L1 Antibody (Center) - Additional Information****Gene ID** 26039**Other Names**

Calcium-responsive transactivator, SS18-like protein 1, SYT homolog 1, SS18L1, CREST, KIAA0693

**Target/Specificity**

This SS18L1 antibody is generated from rabbits immunized with a KLH conjugated synthetic peptide between 272-300 amino acids from the Central region of human SS18L1.

**Dilution**

WB~~1:1000

**Format**

Purified polyclonal antibody supplied in PBS with 0.09% (W/V) sodium azide. This antibody is purified through a protein A column, followed by peptide affinity purification.

**Storage**

Maintain refrigerated at 2-8°C for up to 2 weeks. For long term storage store at -20°C in small aliquots to prevent freeze-thaw cycles.

**Precautions**

SS18L1 Antibody (Center) is for research use only and not for use in diagnostic or therapeutic procedures.

**SS18L1 Antibody (Center) - Protein Information****Name** SS18L1**Synonyms** CREST, KIAA0693

**Function** Transcriptional activator which is required for calcium- dependent dendritic growth and branching in cortical neurons. Recruits CREB-binding protein (CREBBP) to nuclear bodies. Component of the CREST-BRG1 complex, a multiprotein complex that regulates promoter activation by orchestrating a calcium-dependent release of a repressor complex and a recruitment of an activator complex. In resting neurons, transcription of the c-FOS promoter is inhibited by BRG1-dependent recruitment of a phospho-RB1-HDAC1 repressor complex. Upon calcium influx, RB1 is dephosphorylated by calcineurin, which leads to release of the repressor complex. At the same time, there is increased recruitment of CREBBP to the promoter by a CREST-dependent mechanism, which leads to transcriptional activation. The CREST-BRG1 complex also binds to the NR2B promoter, and activity-dependent induction of NR2B expression involves a release of HDAC1 and recruitment of CREBBP (By similarity).

#### **Cellular Location**

Nucleus. Chromosome, centromere, kinetochore. Note=Localizes to nuclear bodies Colocalizes with SGO1 at kinetochore (By similarity).

#### **Tissue Location**

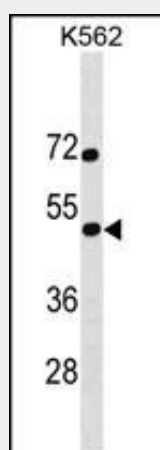
Ubiquitous; with lowest levels in spleen.

### **SS18L1 Antibody (Center) - Protocols**

Provided below are standard protocols that you may find useful for product applications.

- [Western Blot](#)
- [Blocking Peptides](#)
- [Dot Blot](#)
- [Immunohistochemistry](#)
- [Immunofluorescence](#)
- [Immunoprecipitation](#)
- [Flow Cytometry](#)
- [Cell Culture](#)

### **SS18L1 Antibody (Center) - Images**



SS18L1 Antibody (Center) (Cat. #AP18184c) western blot analysis in K562 cell line lysates (35ug/lane). This demonstrates the SS18L1 antibody detected the SS18L1 protein (arrow).

### **SS18L1 Antibody (Center) - Background**

Synovial sarcomas occur most frequently in the extremities

around large joints. More than 90% of cases have a recurrent and specific chromosomal translocation, t(X;18)(p11.2;q11.2), in which the 5-prime end of the SS18 gene (MIM 600192) is fused in-frame to the 3-prime end of the SSX1 (MIM 312820), SSX2 (MIM 300192), or SSX4 (MIM 300326) gene. The SS18L1 gene is homologous to SS18.

#### **SS18L1 Antibody (Center) - References**

Yoshida, T., et al. Int. J. Mol. Med. 25(4):649-656(2010)  
Oguri, M., et al. Am. J. Hypertens. 23(1):70-77(2010)  
Yoshida, T., et al. Int. J. Mol. Med. 24(4):539-547(2009)  
de Bruijn, D.R., et al. Cytogenet. Genome Res. 112 (3-4), 222-226 (2006) :  
Pradhan, A., et al. J. Biol. Chem. 280(26):24738-24743(2005)