

**PCDHA1 Antibody (Center)**  
**Affinity Purified Rabbit Polyclonal Antibody (Pab)**  
**Catalog # AP18214C**

**Specification**

---

**PCDHA1 Antibody (Center) - Product Information**

Application	WB,E
Primary Accession	<a href="#">O9Y5I3</a>
Other Accession	<a href="#">NP_061723.1</a>
Reactivity	Human
Host	Rabbit
Clonality	Polyclonal
Isotype	Rabbit IgG
Calculated MW	102952
Antigen Region	288-316

**PCDHA1 Antibody (Center) - Additional Information**

**Gene ID** 56147

**Other Names**

Protocadherin alpha-1, PCDH-alpha-1, PCDHA1

**Target/Specificity**

This PCDHA1 antibody is generated from rabbits immunized with a KLH conjugated synthetic peptide between 288-316 amino acids from the Central region of human PCDHA1.

**Dilution**

WB~~1:1000

**Format**

Purified polyclonal antibody supplied in PBS with 0.09% (W/V) sodium azide. This antibody is purified through a protein A column, followed by peptide affinity purification.

**Storage**

Maintain refrigerated at 2-8°C for up to 2 weeks. For long term storage store at -20°C in small aliquots to prevent freeze-thaw cycles.

**Precautions**

PCDHA1 Antibody (Center) is for research use only and not for use in diagnostic or therapeutic procedures.

**PCDHA1 Antibody (Center) - Protein Information**

**Name** PCDHA1

**Function** Potential calcium-dependent cell-adhesion protein. May be involved in the establishment and maintenance of specific neuronal connections in the brain.

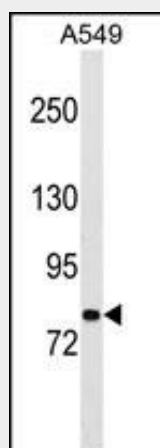
**Cellular Location**

[Isoform 1]: Cell membrane; Single- pass type I membrane protein

**PCDHA1 Antibody (Center) - Protocols**

Provided below are standard protocols that you may find useful for product applications.

- [Western Blot](#)
- [Blocking Peptides](#)
- [Dot Blot](#)
- [Immunohistochemistry](#)
- [Immunofluorescence](#)
- [Immunoprecipitation](#)
- [Flow Cytometry](#)
- [Cell Culture](#)

**PCDHA1 Antibody (Center) - Images**

PCDHA1 Antibody (Center) (Cat. #AP18214c) western blot analysis in A549 cell line lysates (35ug/lane). This demonstrates the PCDHA1 antibody detected the PCDHA1 protein (arrow).

**PCDHA1 Antibody (Center) - Background**

This gene is a member of the protocadherin alpha gene cluster, one of three related gene clusters tandemly linked on chromosome five that demonstrate an unusual genomic organization similar to that of B-cell and T-cell receptor gene clusters. The alpha gene cluster is composed of 15 cadherin superfamily genes related to the mouse CNR genes and consists of 13 highly similar and 2 more distantly related coding sequences. The tandem array of 15 N-terminal exons, or variable exons, are followed by downstream C-terminal exons, or constant exons, which are shared by all genes in the cluster. The large, uninterrupted N-terminal exons each encode six cadherin ectodomains while the C-terminal exons encode the cytoplasmic domain. These neural cadherin-like cell adhesion proteins are integral plasma membrane proteins that most likely play a critical role in the establishment and function of specific cell-cell connections in the brain. Alternative splicing has been observed and additional variants have been suggested but their full-length nature has yet to be determined.

**PCDHA1 Antibody (Center) - References**

Lachman, H.M., et al. Psychiatr. Genet. 18(3):110-115(2008)  
Wu, C., et al. Proteomics 7(11):1775-1785(2007)  
Wu, Q., et al. Genome Res. 11(3):389-404(2001)  
Nollet, F., et al. J. Mol. Biol. 299(3):551-572(2000)  
Yagi, T., et al. Genes Dev. 14(10):1169-1180(2000)