

BPHL Antibody (Center)
Affinity Purified Rabbit Polyclonal Antibody (Pab)
Catalog # AP18229C**Specification**

BPHL Antibody (Center) - Product Information

Application	WB,E
Primary Accession	Q86WA6
Other Accession	NP_004323.2
Reactivity	Human
Host	Rabbit
Clonality	Polyclonal
Isotype	Rabbit IgG
Calculated MW	32543
Antigen Region	96-124

BPHL Antibody (Center) - Additional Information**Gene ID** 670**Other Names**

Valacyclovir hydrolase, VACVase, Valacyclovirase, 31--, Biphenyl hydrolase-like protein, Biphenyl hydrolase-related protein, Bph-rp, Breast epithelial mucin-associated antigen, MCNAA, BPHL, MCNAA

Target/Specificity

This BPHL antibody is generated from rabbits immunized with a KLH conjugated synthetic peptide between 96-124 amino acids from the Central region of human BPHL.

Dilution

WB~~1:1000

E~~Use at an assay dependent concentration.

Format

Purified polyclonal antibody supplied in PBS with 0.09% (W/V) sodium azide. This antibody is purified through a protein A column, followed by peptide affinity purification.

Storage

Maintain refrigerated at 2-8°C for up to 2 weeks. For long term storage store at -20°C in small aliquots to prevent freeze-thaw cycles.

Precautions

BPHL Antibody (Center) is for research use only and not for use in diagnostic or therapeutic procedures.

BPHL Antibody (Center) - Protein Information**Name** BPHL

Synonyms MCNAA

Function Specific alpha-amino acid ester serine hydrolase that prefers small, hydrophobic, and aromatic side chains and does not have a stringent requirement for the leaving group other than preferring a primary alcohol (PubMed:[12732646](#), PubMed:[15832508](#), PubMed:[18256025](#), PubMed:[25333274](#), PubMed:[32196348](#)). Has homocysteine-thiolactonase activity (in vitro) and may play a significant role in the detoxification of homocysteine thiolactone in vivo (PubMed:[25333274](#)). Catalyzes the hydrolytic activation of amino acid ester prodrugs of nucleoside analogs such as valacyclovir and valganciclovir, converting them into their active forms (acyclovir and ganciclovir) (PubMed:[15832508](#), PubMed:[18256025](#)).

Cellular Location

Mitochondrion.

Tissue Location

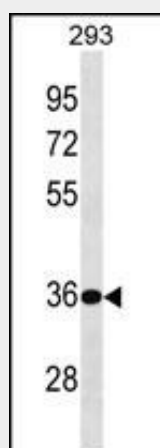
Expressed at high levels in liver and kidney and lower levels in heart, intestine and skeletal muscle

BPHL Antibody (Center) - Protocols

Provided below are standard protocols that you may find useful for product applications.

- [Western Blot](#)
- [Blocking Peptides](#)
- [Dot Blot](#)
- [Immunohistochemistry](#)
- [Immunofluorescence](#)
- [Immunoprecipitation](#)
- [Flow Cytometry](#)
- [Cell Culture](#)

BPHL Antibody (Center) - Images



BPHL Antibody (Center) (Cat. #AP18229c) western blot analysis in 293 cell line lysates (35ug/lane). This demonstrates the BPHL antibody detected the BPHL protein (arrow).

BPHL Antibody (Center) - Background

This gene encodes a member of the serine protease family of hydrolytic enzymes which contain a serine in their active site. The encoded protein may play a role in activation of the antiviral

prodrug valacyclovir. Alternatively spliced transcript variants have been described.

BPHL Antibody (Center) - References

Davila, S., et al. Genes Immun. 11(3):232-238(2010)
Lai, L., et al. J. Biol. Chem. 283(14):9318-9327(2008)
Grigo, K., et al. Biol. Chem. 389(2):179-187(2008)
Melk, A., et al. Kidney Int. 68(6):2667-2679(2005)
Kim, I., et al. Mol. Pharm. 1(6):434-446(2004)