

PLEKHA1 Antibody (Center)
Affinity Purified Rabbit Polyclonal Antibody (Pab)
Catalog # AP18230c

Specification

PLEKHA1 Antibody (Center) - Product Information

Application	WB,E
Primary Accession	O9HB21
Other Accession	NP_001001974.1
Reactivity	Human
Host	Rabbit
Clonality	Polyclonal
Isotype	Rabbit IgG
Calculated MW	45553
Antigen Region	149-178

PLEKHA1 Antibody (Center) - Additional Information

Gene ID 59338

Other Names

Pleckstrin homology domain-containing family A member 1, PH domain-containing family A member 1, Tandem PH domain-containing protein 1, TAPP-1, PLEKHA1, TAPP1

Target/Specificity

This PLEKHA1 antibody is generated from rabbits immunized with a KLH conjugated synthetic peptide between 149-178 amino acids from the Central region of human PLEKHA1.

Dilution

WB~~1:1000

E~~Use at an assay dependent concentration.

Format

Purified polyclonal antibody supplied in PBS with 0.09% (W/V) sodium azide. This antibody is purified through a protein A column, followed by peptide affinity purification.

Storage

Maintain refrigerated at 2-8°C for up to 2 weeks. For long term storage store at -20°C in small aliquots to prevent freeze-thaw cycles.

Precautions

PLEKHA1 Antibody (Center) is for research use only and not for use in diagnostic or therapeutic procedures.

PLEKHA1 Antibody (Center) - Protein Information

Name PLEKHA1

Synonyms TAPP1

Function Binds specifically to phosphatidylinositol 3,4-diphosphate (PtdIns3,4P2), but not to other phosphoinositides. May recruit other proteins to the plasma membrane.

Cellular Location

Cytoplasm. Cell membrane; Peripheral membrane protein. Nucleus. Note=Locates to the plasma membrane after treatments that stimulate the production of PtdIns3,4P2

Tissue Location

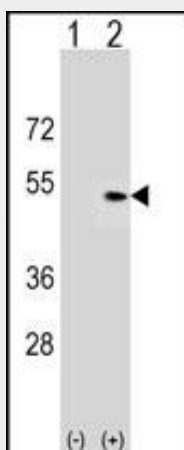
Highly expressed in skeletal muscle, thymus, pancreas, placenta and lung. Detected at low levels in brain, heart, peripheral blood leukocytes, testis, ovary, spinal cord, thyroid, kidney, liver, small intestine and colon.

PLEKHA1 Antibody (Center) - Protocols

Provided below are standard protocols that you may find useful for product applications.

- [Western Blot](#)
- [Blocking Peptides](#)
- [Dot Blot](#)
- [Immunohistochemistry](#)
- [Immunofluorescence](#)
- [Immunoprecipitation](#)
- [Flow Cytometry](#)
- [Cell Culture](#)

PLEKHA1 Antibody (Center) - Images



Western blot analysis of PLEKHA1 (arrow) using rabbit polyclonal PLEKHA1 Antibody (Center) (Cat. #AP18230c). 293 cell lysates (2 ug/lane) either nontransfected (Lane 1) or transiently transfected (Lane 2) with the PLEKHA1 gene.

PLEKHA1 Antibody (Center) - Background

This gene encodes a pleckstrin homology domain-containing adapter protein. The encoded protein is localized to the plasma membrane where it specifically binds phosphatidylinositol 3,4-bisphosphate. This protein may be involved in the formation of signaling complexes in the plasma membrane. Polymorphisms in this

gene are associated with age-related macular degeneration. Alternate splicing results in multiple transcript variants. A pseudogene of this gene is found on chromosome 5.

PLEKHA1 Antibody (Center) - References

Deangelis, M.M., et al. Ophthalmology 115(7):1209-1215(2008)
Manna, D., et al. J. Biol. Chem. 282(44):32093-32105(2007)
Kanda, A., et al. Proc. Natl. Acad. Sci. U.S.A. 104(41):16227-16232(2007)
Leveziel, N., et al. Mol. Vis. 13, 2153-2159 (2007) :
Hogan, A., et al. J. Biol. Chem. 279(51):53717-53724(2004)