

RHPN1 Antibody (C-term)
Affinity Purified Rabbit Polyclonal Antibody (Pab)
Catalog # AP18237b

Specification

RHPN1 Antibody (C-term) - Product Information

Application	WB,E
Primary Accession	Q8TCX5
Other Accession	NP_443156.2
Reactivity	Human, Mouse
Host	Rabbit
Clonality	Polyclonal
Isotype	Rabbit IgG
Calculated MW	73590
Antigen Region	478-505

RHPN1 Antibody (C-term) - Additional Information

Gene ID 114822

Other Names

Rhopilin-1, GTP-Rho-binding protein 1, RHPN1, KIAA1929

Target/Specificity

This RHPN1 antibody is generated from rabbits immunized with a KLH conjugated synthetic peptide between 478-505 amino acids from the C-terminal region of human RHPN1.

Dilution

WB~~1:1000

E~~Use at an assay dependent concentration.

Format

Purified polyclonal antibody supplied in PBS with 0.09% (W/V) sodium azide. This antibody is purified through a protein A column, followed by peptide affinity purification.

Storage

Maintain refrigerated at 2-8°C for up to 2 weeks. For long term storage store at -20°C in small aliquots to prevent freeze-thaw cycles.

Precautions

RHPN1 Antibody (C-term) is for research use only and not for use in diagnostic or therapeutic procedures.

RHPN1 Antibody (C-term) - Protein Information

Name RHPN1 ([HGNC:19973](#))

Synonyms KIAA1929

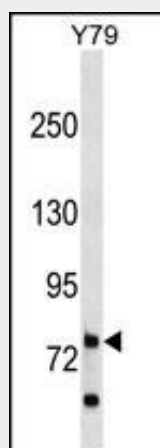
Function Has no enzymatic activity. May serve as a target for Rho, and interact with some cytoskeletal component upon Rho binding or relay a Rho signal to other molecules.

RHPN1 Antibody (C-term) - Protocols

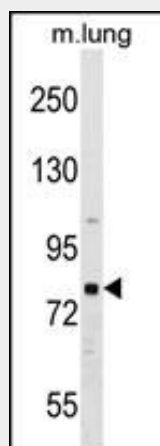
Provided below are standard protocols that you may find useful for product applications.

- [Western Blot](#)
- [Blocking Peptides](#)
- [Dot Blot](#)
- [Immunohistochemistry](#)
- [Immunofluorescence](#)
- [Immunoprecipitation](#)
- [Flow Cytometry](#)
- [Cell Culture](#)

RHPN1 Antibody (C-term) - Images



RHPN1 Antibody (C-term) (Cat. #AP18237b) western blot analysis in Y79 cell line lysates (35ug/lane). This demonstrates the RHPN1 antibody detected the RHPN1 protein (arrow).



RHPN1 Antibody (C-term) (Cat. #AP18237b) western blot analysis in mouse lung tissue lysates (35ug/lane). This demonstrates the RHPN1 antibody detected the RHPN1 protein (arrow).

RHPN1 Antibody (C-term) - Background

RHPN1 has no enzymatic activity. May serve as a target for Rho, and interact with some cytoskeletal component upon Rho binding or relay a Rho signal to other molecules (By similarity).

RHPN1 Antibody (C-term) - References

Jaffe, A.B., et al. Mol. Cell. Biol. 24(4):1736-1746(2004)
Peck, J.W., et al. J. Biol. Chem. 277(46):43924-43932(2002)
Fujita, A., et al. J. Cell. Sci. 113 (PT 1), 103-112 (2000) :