

OTP Antibody (Center)
Affinity Purified Rabbit Polyclonal Antibody (Pab)
Catalog # AP18242c**Specification**

OTP Antibody (Center) - Product Information

Application	WB,E
Primary Accession	Q5XKR4
Other Accession	O09113 , Q6DGH9 , NP_115485.1
Reactivity	Human, Mouse
Predicted	Zebrafish
Host	Rabbit
Clonality	Polyclonal
Isotype	Rabbit IgG
Calculated MW	34159
Antigen Region	88-115

OTP Antibody (Center) - Additional Information**Gene ID** 23440**Other Names**

Homeobox protein orthopedia, OTP

Target/Specificity

This OTP antibody is generated from rabbits immunized with a KLH conjugated synthetic peptide between 88-115 amino acids from the Central region of human OTP.

Dilution

WB~~1:1000

E~~Use at an assay dependent concentration.

Format

Purified polyclonal antibody supplied in PBS with 0.09% (W/V) sodium azide. This antibody is purified through a protein A column, followed by peptide affinity purification.

Storage

Maintain refrigerated at 2-8°C for up to 2 weeks. For long term storage store at -20°C in small aliquots to prevent freeze-thaw cycles.

Precautions

OTP Antibody (Center) is for research use only and not for use in diagnostic or therapeutic procedures.

OTP Antibody (Center) - Protein Information**Name** OTP

Function Probably involved in the differentiation of hypothalamic neuroendocrine cells.

Cellular Location

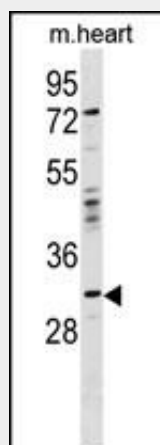
Nucleus {ECO:0000255|PROSITE-ProRule:PRU00108, ECO:0000255|PROSITE-ProRule:PRU00138, ECO:0000269|PubMed:10458915}

OTP Antibody (Center) - Protocols

Provided below are standard protocols that you may find useful for product applications.

- [Western Blot](#)
- [Blocking Peptides](#)
- [Dot Blot](#)
- [Immunohistochemistry](#)
- [Immunofluorescence](#)
- [Immunoprecipitation](#)
- [Flow Cytometry](#)
- [Cell Culture](#)

OTP Antibody (Center) - Images



OTP Antibody (Center) (Cat. #AP18242c) western blot analysis in mouse heart tissue lysates (35ug/lane). This demonstrates the OTP antibody detected the OTP protein (arrow).

OTP Antibody (Center) - Background

This gene encodes a member of the homeodomain (HD) family. HD family proteins are helix-turn-helix transcription factors that play key roles in the specification of cell fates. This protein may function during brain development.

OTP Antibody (Center) - References

Lin, X., et al. Genomics 60(1):96-104(1999)