

PGM2L1 Antibody (C-term)
Affinity Purified Rabbit Polyclonal Antibody (Pab)
Catalog # AP18243b

Specification

PGM2L1 Antibody (C-term) - Product Information

Application	WB,E
Primary Accession	Q6PCE3
Other Accession	NP_775853.2
Reactivity	Human, Mouse
Host	Rabbit
Clonality	Polyclonal
Isotype	Rabbit IgG
Calculated MW	70442
Antigen Region	491-518

PGM2L1 Antibody (C-term) - Additional Information

Gene ID 283209

Other Names

Glucose 1, 6-bisphosphate synthase, PMMLP, Phosphoglucomutase-2-like 1, PGM2L1, BM32A

Target/Specificity

This PGM2L1 antibody is generated from rabbits immunized with a KLH conjugated synthetic peptide between 491-518 amino acids from the C-terminal region of human PGM2L1.

Dilution

WB~~1:1000

E~~Use at an assay dependent concentration.

Format

Purified polyclonal antibody supplied in PBS with 0.09% (W/V) sodium azide. This antibody is purified through a protein A column, followed by peptide affinity purification.

Storage

Maintain refrigerated at 2-8°C for up to 2 weeks. For long term storage store at -20°C in small aliquots to prevent freeze-thaw cycles.

Precautions

PGM2L1 Antibody (C-term) is for research use only and not for use in diagnostic or therapeutic procedures.

PGM2L1 Antibody (C-term) - Protein Information

Name PGM2L1 ([HGNC:20898](#))

Synonyms BM32A

Function Glucose 1,6-bisphosphate synthase using 1,3- bisphosphoglycerate as a phosphate donor and a series of 1-phosphate sugars, including glucose 1-phosphate, mannose 1-phosphate, ribose 1- phosphate and deoxyribose 1-phosphate, as acceptors (PubMed:[17804405](#)). In vitro, also exhibits very low phosphopentomutase and phosphoglucomutase activity which are most probably not physiologically relevant (PubMed:[17804405](#)).

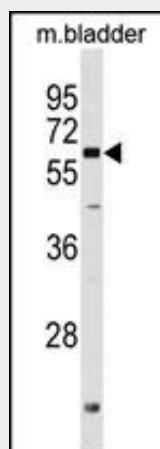
Cellular Location
Cytoplasm, cytosol.

PGM2L1 Antibody (C-term) - Protocols

Provided below are standard protocols that you may find useful for product applications.

- [Western Blot](#)
- [Blocking Peptides](#)
- [Dot Blot](#)
- [Immunohistochemistry](#)
- [Immunofluorescence](#)
- [Immunoprecipitation](#)
- [Flow Cytometry](#)
- [Cell Culture](#)

PGM2L1 Antibody (C-term) - Images



PGM2L1 Antibody (C-term) (Cat. #AP18243b) western blot analysis in mouse bladder tissue lysates (35ug/lane). This demonstrates the PGM2L1 antibody detected the PGM2L1 protein (arrow).

PGM2L1 Antibody (C-term) - Background

Glucose 1,6-bisphosphate synthase using 1,3-bisphosphoglycerate as a phosphate donor and a series of 1-phosphate sugars as acceptors, including glucose 1-phosphate, mannose 1-phosphate, ribose 1-phosphate and deoxyribose 1-phosphate. 5 or 6-phosphosugars are bad substrates, with the exception of glucose 6-phosphate. Also synthesizes ribose 1,5-bisphosphate. Has only low phosphopentomutase and phosphoglucomutase activities.

PGM2L1 Antibody (C-term) - References

Maliekal, P., et al. J. Biol. Chem. 282(44):31844-31851(2007)
Sugiyama, N., et al. Mol. Cell Proteomics 6(6):1103-1109(2007)
Olsen, J.V., et al. Cell 127(3):635-648(2006)

Wistow, G., et al. Mol. Vis. 8, 205-220 (2002) :