

**MBD3L1 Antibody (C-term)**  
**Affinity Purified Rabbit Polyclonal Antibody (Pab)**  
**Catalog # AP18250b****Specification**

---

**MBD3L1 Antibody (C-term) - Product Information**

Application	WB,E
Primary Accession	<a href="#">Q8WWY6</a>
Other Accession	<a href="#">NP_660209.2</a>
Reactivity	Human
Host	Rabbit
Clonality	Polyclonal
Isotype	Rabbit IgG
Calculated MW	21616
Antigen Region	168-194

**MBD3L1 Antibody (C-term) - Additional Information****Gene ID** 85509**Other Names**

Methyl-CpG-binding domain protein 3-like 1, MBD3-like protein 1, MBD3L1, MBD3L

**Target/Specificity**

This MBD3L1 antibody is generated from rabbits immunized with a KLH conjugated synthetic peptide between 168-194 amino acids from the C-terminal region of human MBD3L1.

**Dilution**

WB~~1:1000

E~~Use at an assay dependent concentration.

**Format**

Purified polyclonal antibody supplied in PBS with 0.09% (W/V) sodium azide. This antibody is purified through a protein A column, followed by peptide affinity purification.

**Storage**

Maintain refrigerated at 2-8°C for up to 2 weeks. For long term storage store at -20°C in small aliquots to prevent freeze-thaw cycles.

**Precautions**

MBD3L1 Antibody (C-term) is for research use only and not for use in diagnostic or therapeutic procedures.

**MBD3L1 Antibody (C-term) - Protein Information****Name** MBD3L1**Synonyms** MBD3L

**Function** Transcriptional repressor.

**Cellular Location**

Nucleus. Note=Nuclear, in large foci

**Tissue Location**

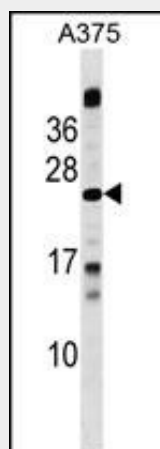
Highly expressed in testis. Detected at low levels in pancreas. Not detected in the other tissues tested

**MBD3L1 Antibody (C-term) - Protocols**

Provided below are standard protocols that you may find useful for product applications.

- [Western Blot](#)
- [Blocking Peptides](#)
- [Dot Blot](#)
- [Immunohistochemistry](#)
- [Immunofluorescence](#)
- [Immunoprecipitation](#)
- [Flow Cytometry](#)
- [Cell Culture](#)

**MBD3L1 Antibody (C-term) - Images**



MBD3L1 Antibody (C-term) (Cat. #AP18250b) western blot analysis in A375 cell line lysates (35ug/lane). This demonstrates the MBD3L1 antibody detected the MBD3L1 protein (arrow).

**MBD3L1 Antibody (C-term) - Background**

This gene encodes a protein that is related to methyl-CpG-binding proteins but lacks the methyl-CpG binding domain. The protein is localized to discrete areas in the nucleus, and expression appears to be restricted to round spermatids, suggesting that the protein plays a role in the postmeiotic stages of male germ cell development.

**MBD3L1 Antibody (C-term) - References**

Jiang, C.L., et al. J. Biol. Chem. 279(50):52456-52464(2004)  
Yao, Y.L., et al. J. Biol. Chem. 278(43):42560-42568(2003)

Jiang, C.L., et al. Genomics 80(6):621-629(2002)