

**SGK071 Antibody (C-term)**  
**Affinity Purified Rabbit Polyclonal Antibody (Pab)**  
**Catalog # AP18253B**

**Specification**

---

**SGK071 Antibody (C-term) - Product Information**

Application	WB,E
Primary Accession	<a href="#">Q8NE28</a>
Other Accession	<a href="#">NP_714921.3</a>
Reactivity	Human
Host	Rabbit
Clonality	Polyclonal
Isotype	Rabbit IgG
Calculated MW	75677
Antigen Region	583-609

**SGK071 Antibody (C-term) - Additional Information**

**Gene ID** 169436

**Other Names**

Serine/threonine kinase-like domain-containing protein STKLD1, Serine/threonine kinase-like domain-containing protein 1, Sugen kinase 071, STKLD1, C9orf96, SGK071

**Target/Specificity**

This SGK071 antibody is generated from rabbits immunized with a KLH conjugated synthetic peptide between 583-609 amino acids from the C-terminal region of human SGK071.

**Dilution**

WB~~1:1000

**Format**

Purified polyclonal antibody supplied in PBS with 0.09% (W/V) sodium azide. This antibody is purified through a protein A column, followed by peptide affinity purification.

**Storage**

Maintain refrigerated at 2-8°C for up to 2 weeks. For long term storage store at -20°C in small aliquots to prevent freeze-thaw cycles.

**Precautions**

SGK071 Antibody (C-term) is for research use only and not for use in diagnostic or therapeutic procedures.

**SGK071 Antibody (C-term) - Protein Information**

**Name** STKLD1

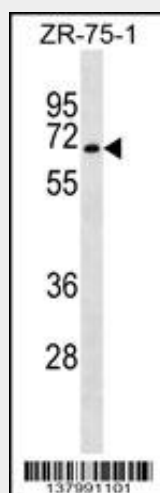
**Synonyms** C9orf96, SGK071

### SGK071 Antibody (C-term) - Protocols

Provided below are standard protocols that you may find useful for product applications.

- [Western Blot](#)
- [Blocking Peptides](#)
- [Dot Blot](#)
- [Immunohistochemistry](#)
- [Immunofluorescence](#)
- [Immunoprecipitation](#)
- [Flow Cytometry](#)
- [Cell Culture](#)

### SGK071 Antibody (C-term) - Images



SGK071 Antibody (C-term) (Cat. #AP18253b) western blot analysis in ZR-75-1 cell line lysates (35ug/lane). This demonstrates the SGK071 antibody detected the SGK071 protein (arrow).

### SGK071 Antibody (C-term) - Background

C9orf96 belongs to the serine/threonine protein kinase family. However, the protein kinase domain is predicted to be catalytically inactive. The specific function of this protein is unknown.

### SGK071 Antibody (C-term) - References

Humphray, S.J., et al. Nature 429(6990):369-374(2004)  
Manning, G., et al. Science 298(5600):1912-1934(2002)