

**SGPP2 Antibody (N-term)**  
**Affinity Purified Rabbit Polyclonal Antibody (Pab)**  
**Catalog # AP18254a**

**Specification**

---

**SGPP2 Antibody (N-term) - Product Information**

Application	WB,E
Primary Accession	<a href="#">Q8IWX5</a>
Other Accession	<a href="#">NP_689599.2</a>
Reactivity	Human
Host	Rabbit
Clonality	Polyclonal
Isotype	Rabbit IgG
Calculated MW	44741
Antigen Region	7-33

**SGPP2 Antibody (N-term) - Additional Information**

**Gene ID** 130367

**Other Names**

Sphingosine-1-phosphate phosphatase 2, SPPase2, Spp2, hSPP2, 313-, Sphingosine-1-phosphatase 2, SGPP2

**Target/Specificity**

This SGPP2 antibody is generated from rabbits immunized with a KLH conjugated synthetic peptide between 7-33 amino acids from the N-terminal region of human SGPP2.

**Dilution**

WB~~1:1000

E~~Use at an assay dependent concentration.

**Format**

Purified polyclonal antibody supplied in PBS with 0.09% (W/V) sodium azide. This antibody is purified through a protein A column, followed by peptide affinity purification.

**Storage**

Maintain refrigerated at 2-8°C for up to 2 weeks. For long term storage store at -20°C in small aliquots to prevent freeze-thaw cycles.

**Precautions**

SGPP2 Antibody (N-term) is for research use only and not for use in diagnostic or therapeutic procedures.

**SGPP2 Antibody (N-term) - Protein Information**

**Name** SGPP2 ([HGNC:19953](#))

**Function** Has specific phosphohydrolase activity towards sphingoid base 1-phosphates. Has high phosphohydrolase activity against dihydrosphingosine-1-phosphate and sphingosine-1-phosphate (S1P) in vitro (PubMed:[12411432](#)). Sphingosine-1-phosphate phosphatase activity is needed for efficient recycling of sphingosine into the sphingolipid synthesis pathway (By similarity). May play a role in attenuating intracellular sphingosine 1-phosphate (S1P) signaling. May play a role in pro-inflammatory signaling (PubMed:[17113265](#)). Plays a role in the regulation of pancreatic islet beta-cell endoplasmic reticulum stress and proliferation (By similarity).

#### **Cellular Location**

Endoplasmic reticulum membrane; Multi-pass membrane protein

#### **Tissue Location**

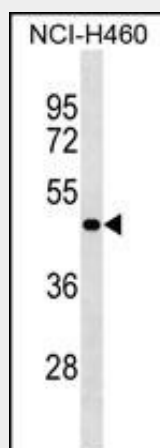
Expressed strongly in kidney and heart, followed by brain, colon, small intestine and lung. Not detected in skeletal muscle, thymus, spleen, liver, placenta, and peripheral blood leukocytes.

### **SGPP2 Antibody (N-term) - Protocols**

Provided below are standard protocols that you may find useful for product applications.

- [Western Blot](#)
- [Blocking Peptides](#)
- [Dot Blot](#)
- [Immunohistochemistry](#)
- [Immunofluorescence](#)
- [Immunoprecipitation](#)
- [Flow Cytometry](#)
- [Cell Culture](#)

### **SGPP2 Antibody (N-term) - Images**



SGPP2 Antibody (N-term) (Cat. #AP18254a) western blot analysis in NCI-H460 cell line lysates (35ug/lane). This demonstrates the SGPP2 antibody detected the SGPP2 protein (arrow).

### **SGPP2 Antibody (N-term) - Background**

Sphingosine-1-phosphate (S1P) is a bioactive sphingolipid metabolite that regulates diverse biologic processes. SGPP2 catalyzes the degradation of S1P (Ogawa et al., 2003 [PubMed 12411432]).

### **SGPP2 Antibody (N-term) - References**

Mechtcheriakova, D., et al. Cell. Signal. 19(4):748-760(2007)  
Ogawa, C., et al. J. Biol. Chem. 278(2):1268-1272(2003)