

**KIF15 Antibody (Center)**  
**Affinity Purified Rabbit Polyclonal Antibody (Pab)**  
**Catalog # AP18273C****Specification**

---

**KIF15 Antibody (Center) - Product Information**

Application	WB,E
Primary Accession	<a href="#">Q9NS87</a>
Other Accession	<a href="#">NP_064627.1</a>
Reactivity	Human, Mouse
Host	Rabbit
Clonality	Polyclonal
Isotype	Rabbit IgG
Calculated MW	160160
Antigen Region	777-804

**KIF15 Antibody (Center) - Additional Information****Gene ID** 56992**Other Names**

Kinesin-like protein KIF15, Kinesin-like protein 2, hKLP2, Kinesin-like protein 7, Serologically defined breast cancer antigen NY-BR-62, KIF15, KLP2, KNSL7

**Target/Specificity**

This KIF15 antibody is generated from rabbits immunized with a KLH conjugated synthetic peptide between 777-804 amino acids from the Central region of human KIF15.

**Dilution**

WB~~1:1000

**Format**

Purified polyclonal antibody supplied in PBS with 0.09% (W/V) sodium azide. This antibody is purified through a protein A column, followed by peptide affinity purification.

**Storage**

Maintain refrigerated at 2-8°C for up to 2 weeks. For long term storage store at -20°C in small aliquots to prevent freeze-thaw cycles.

**Precautions**

KIF15 Antibody (Center) is for research use only and not for use in diagnostic or therapeutic procedures.

**KIF15 Antibody (Center) - Protein Information****Name** KIF15**Synonyms** KLP2, KNSL7

**Function** Plus-end directed kinesin-like motor enzyme involved in mitotic spindle assembly.

**Cellular Location**

Cytoplasm. Cytoplasm, cytoskeleton, spindle. Note=Detected during the interphase in the cytoplasm as finely punctuate pattern and irregularly shaped dots. Detected during mitosis on the mitotic spindle. Colocalizes with TPX2 in mitosis. Localizes at the central spindle at anaphase (By similarity). Localizes at the sites of invaginating cell membranes, a position that corresponds to the location of the contractile actomyosin ring of dividing cells (By similarity). Colocalizes with actin in interphase (By similarity) Colocalizes in dendrites and in growth cone of axons with microtubules (By similarity).

**Tissue Location**

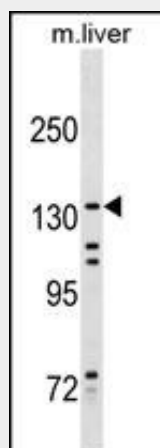
Expressed in testis, colon, thymus and in breast cancer.

**KIF15 Antibody (Center) - Protocols**

Provided below are standard protocols that you may find useful for product applications.

- [Western Blot](#)
- [Blocking Peptides](#)
- [Dot Blot](#)
- [Immunohistochemistry](#)
- [Immunofluorescence](#)
- [Immunoprecipitation](#)
- [Flow Cytometry](#)
- [Cell Culture](#)

**KIF15 Antibody (Center) - Images**



KIF15 Antibody (Center) (Cat. #AP18273c) western blot analysis in mouse liver tissue lysates (35ug/lane). This demonstrates the KIF15 antibody detected the KIF15 protein (arrow).

**KIF15 Antibody (Center) - Background**

Plus-end directed kinesin-like motor enzyme involved in mitotic spindle assembly (By similarity).

**KIF15 Antibody (Center) - References**

Vanneste, D., et al. Curr. Biol. 19(20):1712-1717(2009)  
Tanenbaum, M.E., et al. Curr. Biol. 19(20):1703-1711(2009)

Stelzl, U., et al. Cell 122(6):957-968(2005)  
Scanlan, M.J., et al. Cancer Immun. 1, 4 (2001) :  
Sueishi, M., et al. J. Biol. Chem. 275(37):28888-28892(2000)