

MS4A5 Antibody (N-term)
Affinity Purified Rabbit Polyclonal Antibody (Pab)
Catalog # AP18276a**Specification**

MS4A5 Antibody (N-term) - Product Information

Application	WB,E
Primary Accession	O9H3V2
Other Accession	NP_076434.2
Reactivity	Human
Host	Rabbit
Clonality	Polyclonal
Isotype	Rabbit IgG
Calculated MW	22283
Antigen Region	22-48

MS4A5 Antibody (N-term) - Additional Information**Gene ID** 64232**Other Names**

Membrane-spanning 4-domains subfamily A member 5, CD20 antigen-like 2, Testis-expressed transmembrane protein 4, MS4A5, CD20L2, TETM4

Target/Specificity

This MS4A5 antibody is generated from rabbits immunized with a KLH conjugated synthetic peptide between 22-48 amino acids from the N-terminal region of human MS4A5.

Dilution

WB~~1:1000

Format

Purified polyclonal antibody supplied in PBS with 0.09% (W/V) sodium azide. This antibody is purified through a protein A column, followed by peptide affinity purification.

Storage

Maintain refrigerated at 2-8°C for up to 2 weeks. For long term storage store at -20°C in small aliquots to prevent freeze-thaw cycles.

Precautions

MS4A5 Antibody (N-term) is for research use only and not for use in diagnostic or therapeutic procedures.

MS4A5 Antibody (N-term) - Protein Information**Name** MS4A5**Synonyms** CD20L2, TETM4

Function May be involved in signal transduction as a component of a multimeric receptor complex.

Cellular Location

Membrane; Multi-pass membrane protein.

Tissue Location

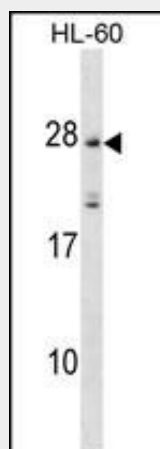
Expressed at high level in the testis. Detected also in the pancreas, heart and in the brain

MS4A5 Antibody (N-term) - Protocols

Provided below are standard protocols that you may find useful for product applications.

- [Western Blot](#)
- [Blocking Peptides](#)
- [Dot Blot](#)
- [Immunohistochemistry](#)
- [Immunofluorescence](#)
- [Immunoprecipitation](#)
- [Flow Cytometry](#)
- [Cell Culture](#)

MS4A5 Antibody (N-term) - Images



MS4A5 Antibody (N-term) (Cat. #AP18276a) western blot analysis in HL-60 cell line lysates (35ug/lane). This demonstrates the MS4A5 antibody detected the MS4A5 protein (arrow).

MS4A5 Antibody (N-term) - Background

This gene encodes a member of the membrane-spanning 4A gene family. Members of this nascent protein family are characterized by common structural features and similar intron/exon splice boundaries and display unique expression patterns among hematopoietic cells and nonlymphoid tissues. Though this member is not expressed in hematopoietic cells specifically, it may be involved in signal transduction like many of its related family members. The gene encoding this protein is localized to 11q12, among a cluster of family members.

MS4A5 Antibody (N-term) - References

Davila, S., et al. Genes Immun. 11(3):232-238(2010)
Liang, Y., et al. Immunogenetics 53(5):357-368(2001)
Liang, Y., et al. Genomics 72(2):119-127(2001)
Ishibashi, K., et al. Gene 264(1):87-93(2001)
Hulett, M.D., et al. Biochem. Biophys. Res. Commun. 280(1):374-379(2001)