

NAP1L2 Antibody (N-term)
Affinity Purified Rabbit Polyclonal Antibody (Pab)
Catalog # AP18278a**Specification**

NAP1L2 Antibody (N-term) - Product Information

Application	WB,E
Primary Accession	O9ULW6
Other Accession	P51860 , NP_068798.1
Reactivity	Human
Predicted	Mouse
Host	Rabbit
Clonality	Polyclonal
Isotype	Rabbit IgG
Calculated MW	52542
Antigen Region	113-139

NAP1L2 Antibody (N-term) - Additional Information**Gene ID** 4674**Other Names**

Nucleosome assembly protein 1-like 2, Brain-specific protein, X-linked, NAP1L2, BPX

Target/Specificity

This NAP1L2 antibody is generated from rabbits immunized with a KLH conjugated synthetic peptide between 113-139 amino acids from the N-terminal region of human NAP1L2.

Dilution

WB~~1:1000

E~~Use at an assay dependent concentration.

Format

Purified polyclonal antibody supplied in PBS with 0.09% (W/V) sodium azide. This antibody is purified through a protein A column, followed by peptide affinity purification.

Storage

Maintain refrigerated at 2-8°C for up to 2 weeks. For long term storage store at -20°C in small aliquots to prevent freeze-thaw cycles.

Precautions

NAP1L2 Antibody (N-term) is for research use only and not for use in diagnostic or therapeutic procedures.

NAP1L2 Antibody (N-term) - Protein Information**Name** NAP1L2

Synonyms BPX

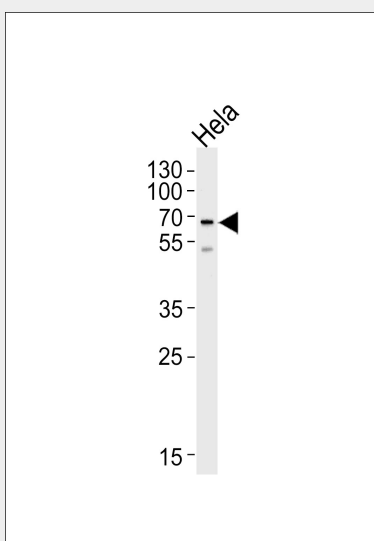
Function Acidic protein which may be involved in interactions with other proteins or DNA.

Cellular Location
Nucleus.

NAP1L2 Antibody (N-term) - Protocols

Provided below are standard protocols that you may find useful for product applications.

- [Western Blot](#)
- [Blocking Peptides](#)
- [Dot Blot](#)
- [Immunohistochemistry](#)
- [Immunofluorescence](#)
- [Immunoprecipitation](#)
- [Flow Cytometry](#)
- [Cell Culture](#)

NAP1L2 Antibody (N-term) - Images

Western blot analysis of lysate from HeLa cell line, using NAP1L2 Antibody (N-term)(Cat. #AP18278a). AP18278a was diluted at 1:1000 at each lane. A goat anti-rabbit IgG H&L(HRP) at 1:5000 dilution was used as the secondary antibody. Lysate at 35ug per lane.

NAP1L2 Antibody (N-term) - Background

This gene encodes a member of the nucleosome assembly protein (NAP) family. The function of this family member is unknown; however, mouse studies suggest that it represents a class of tissue-specific factors interacting with chromatin to regulate neuronal cell proliferation.

NAP1L2 Antibody (N-term) - References

Rogner, U.C., et al. Nat. Genet. 25(4):431-435(2000)

Rougeulle, C., et al. Hum. Mol. Genet. 5(1):41-49(1996)