

PLLp Antibody (N-term)
Affinity Purified Rabbit Polyclonal Antibody (Pab)
Catalog # AP18280a

Specification

PLLp Antibody (N-term) - Product Information

Application	WB,E
Primary Accession	Q9Y342
Other Accession	P47987 , Q9DCU2 , NP_057077.1
Reactivity	Human
Predicted	Mouse, Rat
Host	Rabbit
Clonality	Polyclonal
Isotype	Rabbit IgG
Calculated MW	19987
Antigen Region	1-30

PLLp Antibody (N-term) - Additional Information

Gene ID 51090

Other Names

Plasmolipin, Plasma membrane proteolipid, PLLP, PMLP, TM4SF11

Target/Specificity

This PLLP antibody is generated from rabbits immunized with a KLH conjugated synthetic peptide between 1-30 amino acids from the N-terminal region of human PLLP.

Dilution

WB~~1:1000

E~~Use at an assay dependent concentration.

Format

Purified polyclonal antibody supplied in PBS with 0.09% (W/V) sodium azide. This antibody is purified through a protein A column, followed by peptide affinity purification.

Storage

Maintain refrigerated at 2-8°C for up to 2 weeks. For long term storage store at -20°C in small aliquots to prevent freeze-thaw cycles.

Precautions

PLLp Antibody (N-term) is for research use only and not for use in diagnostic or therapeutic procedures.

PLLp Antibody (N-term) - Protein Information

Name PLLP ([HGNC:18553](#))

Synonyms PMLP, TM4SF11

Function Main component of the myelin sheath that plays an important role in myelin membrane biogenesis and myelination (PubMed:[26002055](#)). Plays an essential function in apical endocytosis. Regulates epithelial development through the regulation of apical endocytosis (By similarity). Part of the intracellular machinery that mediates basolateral-to-apical transport of ICAM-1, an essential adhesion receptor in epithelial cells, from the subapical compartment in hepatic epithelial cells (PubMed:[34999972](#)).

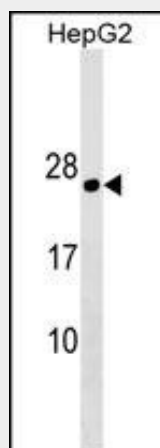
Cellular Location

Cell membrane; Multi-pass membrane protein. Myelin membrane; Multi-pass membrane protein. Apical cell membrane {ECO:0000250|UniProtKB:P47987}; Multi-pass membrane protein. Golgi apparatus. Note=In polarized cells, localized predominantly in the apical membrane (By similarity). Located in lipid raft (By similarity). Recycled between the plasma membrane and the Golgi complex (PubMed:26002055). PLLP is continuously recirculating in the cell (PubMed:26002055). {ECO:0000250|UniProtKB:A3KQ86, ECO:0000250|UniProtKB:P47987, ECO:0000269|PubMed:26002055}

PLLP Antibody (N-term) - Protocols

Provided below are standard protocols that you may find useful for product applications.

- [Western Blot](#)
- [Blocking Peptides](#)
- [Dot Blot](#)
- [Immunohistochemistry](#)
- [Immunofluorescence](#)
- [Immunoprecipitation](#)
- [Flow Cytometry](#)
- [Cell Culture](#)

PLLP Antibody (N-term) - Images

PLLP Antibody (N-term) (Cat. #AP18280a) western blot analysis in HepG2 cell line lysates (35ug/lane). This demonstrates the PLLP antibody detected the PLLP protein (arrow).

PLLP Antibody (N-term) - Background

PLLP appears to be involved in myelination. Could also participate in ion transport events as addition of plasmolipin to lipid bilayers induces the formation of ion channels, which are

voltage-dependent and K(+)-selective (By similarity).

PLL_P Antibody (N-term) - References

Lamesch, P., et al. Genomics 89(3):307-315(2007)
Hamacher, M., et al. Mamm. Genome 12(12):933-937(2001)
Fischer, I., et al. J. Biol. Chem. 269(40):24912-24919(1994)