

**RNF157 Antibody (N-term)**  
**Affinity Purified Rabbit Polyclonal Antibody (Pab)**  
**Catalog # AP18282A****Specification**

---

**RNF157 Antibody (N-term) - Product Information**

Application	WB,E
Primary Accession	<a href="#">Q96PX1</a>
Other Accession	<a href="#">Q3TEL6</a> , <a href="#">NP_443148.1</a> , <a href="#">M0R5D6</a>
Reactivity	Human
Predicted	Mouse, Rat
Host	Rabbit
Clonality	Polyclonal
Isotype	Rabbit IgG
Calculated MW	73579
Antigen Region	4-30

**RNF157 Antibody (N-term) - Additional Information****Gene ID** 114804**Other Names**

RING finger protein 157, RNF157, KIAA1917

**Target/Specificity**

This RNF157 antibody is generated from rabbits immunized with a KLH conjugated synthetic peptide between 4-30 amino acids from the N-terminal region of human RNF157.

**Dilution**

WB~~1:1000

**Format**

Purified polyclonal antibody supplied in PBS with 0.09% (W/V) sodium azide. This antibody is purified through a protein A column, followed by peptide affinity purification.

**Storage**

Maintain refrigerated at 2-8°C for up to 2 weeks. For long term storage store at -20°C in small aliquots to prevent freeze-thaw cycles.

**Precautions**

RNF157 Antibody (N-term) is for research use only and not for use in diagnostic or therapeutic procedures.

**RNF157 Antibody (N-term) - Protein Information****Name** RNF157**Synonyms** KIAA1917

**Function** E3 ubiquitin ligase that ubiquitinates APBB1 for its degradation by the proteasome and thus prevents apoptosis and promotes survival of neurons (PubMed:[25342469](#)). Has a dual role in neurons as it is also required for dendrite growth and maintenance for which its ligase activity is not critical (PubMed:[25342469](#)). May act as a scaffold molecule to regulate this process (PubMed:[25342469](#)). Acts as a downstream effector of the interconnected PI3K and MAPK signaling pathways and thus participates in the regulation of the cell cycle (PubMed:[28655764](#)).

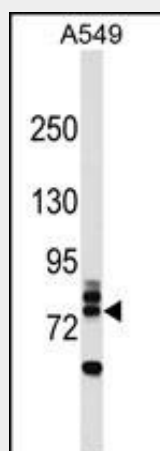
**Cellular Location**

Cytoplasm {ECO:0000250|UniProtKB:M0R5D6}.

**RNF157 Antibody (N-term) - Protocols**

Provided below are standard protocols that you may find useful for product applications.

- [Western Blot](#)
- [Blocking Peptides](#)
- [Dot Blot](#)
- [Immunohistochemistry](#)
- [Immunofluorescence](#)
- [Immunoprecipitation](#)
- [Flow Cytometry](#)
- [Cell Culture](#)

**RNF157 Antibody (N-term) - Images**

RNF157 Antibody (N-term) (Cat. #AP18282a) western blot analysis in A549 cell line lysates (35ug/lane). This demonstrates the RNF157 antibody detected the RNF157 protein (arrow).

**RNF157 Antibody (N-term) - Background**

The function of this protein remains unknown.

**RNF157 Antibody (N-term) - References**

Bailey, S.D., et al. Diabetes Care (2010) In press :  
Rose, J.E., et al. Mol. Med. 16 (7-8), 247-253 (2010) :  
Talmud, P.J., et al. Am. J. Hum. Genet. 85(5):628-642(2009)