

BRUNOL5 Antibody (Center)
Affinity Purified Rabbit Polyclonal Antibody (Pab)
Catalog # AP18320c**Specification**

BRUNOL5 Antibody (Center) - Product Information

Application	WB,E
Primary Accession	Q8N6W0
Other Accession	NP_068757.2
Reactivity	Human
Host	Rabbit
Clonality	Polyclonal
Isotype	Rabbit IgG
Calculated MW	52355
Antigen Region	195-222

BRUNOL5 Antibody (Center) - Additional Information**Gene ID** 60680**Other Names**

CUGBP Elav-like family member 5, CELF-5, Bruno-like protein 5, CUG-BP- and ETR-3-like factor 5, RNA-binding protein BRUNOL-5, CELF5, BRUNOL5

Target/Specificity

This BRUNOL5 antibody is generated from rabbits immunized with a KLH conjugated synthetic peptide between 195-222 amino acids from the Central region of human BRUNOL5.

Dilution

WB~~1:1000

Format

Purified polyclonal antibody supplied in PBS with 0.09% (W/V) sodium azide. This antibody is purified through a protein A column, followed by peptide affinity purification.

Storage

Maintain refrigerated at 2-8°C for up to 2 weeks. For long term storage store at -20°C in small aliquots to prevent freeze-thaw cycles.

Precautions

BRUNOL5 Antibody (Center) is for research use only and not for use in diagnostic or therapeutic procedures.

BRUNOL5 Antibody (Center) - Protein Information**Name** CELF5**Synonyms** BRUNOL5

Function RNA-binding protein implicated in the regulation of pre-mRNA alternative splicing. Mediates exon inclusion and/or exclusion in pre-mRNA that are subject to tissue-specific and developmentally regulated alternative splicing. Specifically activates exon 5 inclusion of cardiac isoforms of TNNT2 during heart remodeling at the juvenile to adult transition. Binds to muscle-specific splicing enhancer (MSE) intronic sites flanking the alternative exon 5 of TNNT2 pre-mRNA.

Cellular Location

Nucleus. Cytoplasm.

Tissue Location

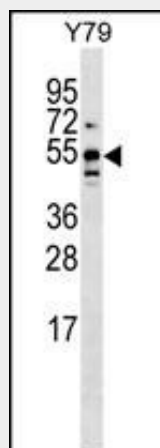
Expressed in brain..

BRUNOL5 Antibody (Center) - Protocols

Provided below are standard protocols that you may find useful for product applications.

- [Western Blot](#)
- [Blocking Peptides](#)
- [Dot Blot](#)
- [Immunohistochemistry](#)
- [Immunofluorescence](#)
- [Immunoprecipitation](#)
- [Flow Cytometry](#)
- [Cell Culture](#)

BRUNOL5 Antibody (Center) - Images



BRUNOL5 Antibody (Center) (Cat. #AP18320c) western blot analysis in Y79 cell line lysates (35ug/lane). This demonstrates the BRUNOL5 Antibody detected the BRUNOL5 protein (arrow).

BRUNOL5 Antibody (Center) - Background

Members of the CELF/BRUNOL protein family contain two N-terminal RNA recognition motif (RRM) domains, one C-terminal RRM domain, and a divergent segment of 160-230 aa between the second and third RRM domains. Members of this protein family regulate pre-mRNA alternative splicing and may also be involved in mRNA editing, and translation. Alternatively spliced transcript variants have been identified in this gene.

BRUNOL5 Antibody (Center) - References

Ladd, A.N., et al. Mol. Cell. Biol. 21(4):1285-1296(2001)
Good, P.J., et al. J. Biol. Chem. 275(37):28583-28592(2000)