

**CLEC17A Antibody (C-term)**  
**Affinity Purified Rabbit Polyclonal Antibody (Pab)**  
**Catalog # AP18330b****Specification**

---

**CLEC17A Antibody (C-term) - Product Information**

Application	WB,E
Primary Accession	<a href="#">Q6ZS10</a>
Other Accession	<a href="#">NP_997273.2</a>
Reactivity	Human
Host	Rabbit
Clonality	Polyclonal
Isotype	Rabbit IgG
Calculated MW	42935
Antigen Region	176-203

**CLEC17A Antibody (C-term) - Additional Information****Gene ID** 388512**Other Names**

C-type lectin domain family 17, member A, Prolectin, CLEC17A

**Target/Specificity**

This CLEC17A antibody is generated from rabbits immunized with a KLH conjugated synthetic peptide between 176-203 amino acids from the C-terminal region of human CLEC17A.

**Dilution**

WB~~1:1000

**Format**

Purified polyclonal antibody supplied in PBS with 0.09% (W/V) sodium azide. This antibody is purified through a protein A column, followed by peptide affinity purification.

**Storage**

Maintain refrigerated at 2-8°C for up to 2 weeks. For long term storage store at -20°C in small aliquots to prevent freeze-thaw cycles.

**Precautions**

CLEC17A Antibody (C-term) is for research use only and not for use in diagnostic or therapeutic procedures.

**CLEC17A Antibody (C-term) - Protein Information****Name** CLEC17A

**Function** Cell surface receptor which may be involved in carbohydrate- mediated communication between cells in the germinal center. Binds glycans with terminal alpha-linked mannose or fucose

residues.

#### Cellular Location

Membrane; Single-pass type II membrane protein. Note=In fibroblasts, expressed on the cell surface.

#### Tissue Location

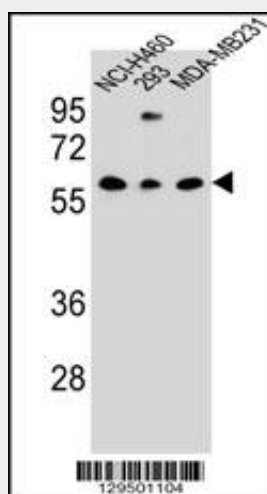
Expressed on dividing B-cells of germinal centers in various tissues, including lymph nodes, tonsils, stomach, intestine, appendix and spleen.

### CLEC17A Antibody (C-term) - Protocols

Provided below are standard protocols that you may find useful for product applications.

- [Western Blot](#)
- [Blocking Peptides](#)
- [Dot Blot](#)
- [Immunohistochemistry](#)
- [Immunofluorescence](#)
- [Immunoprecipitation](#)
- [Flow Cytometry](#)
- [Cell Culture](#)

### CLEC17A Antibody (C-term) - Images



CLEC17A Antibody (C-term) (Cat. #AP18330b) western blot analysis in NCI-H460,293,MDA-MB231 cell line lysates (35ug/lane).This demonstrates the CLEC17A Antibody detected the CLEC17A protein (arrow).

### CLEC17A Antibody (C-term) - Background

Cell surface receptor which may be involved in carbohydrate-mediated communication between cells in the germinal center. Binds glycans with terminal alpha-linked mannose or fucose residues.

### CLEC17A Antibody (C-term) - References

Graham, S.A., et al. J. Biol. Chem. 284(27):18537-18544(2009)