

K1712 Antibody (C-term)
Affinity Purified Rabbit Polyclonal Antibody (Pab)
Catalog # AP18343b**Specification**

K1712 Antibody (C-term) - Product Information

Application	WB,E
Primary Accession	O9C0F1
Other Accession	NP_001035247.1
Reactivity	Human
Host	Rabbit
Clonality	Polyclonal
Isotype	Rabbit IgG
Calculated MW	44140
Antigen Region	278-307

K1712 Antibody (C-term) - Additional Information**Gene ID** 80817**Other Names**

Centrosomal protein of 44 kDa, Cep44, HBV PreS1-transactivated protein 3, PS1TP3, CEP44, KIAA1712

Target/Specificity

This K1712 antibody is generated from rabbits immunized with a KLH conjugated synthetic peptide between 278-307 amino acids from the C-terminal region of human K1712.

Dilution

WB~~1:1000

Format

Purified polyclonal antibody supplied in PBS with 0.09% (W/V) sodium azide. This antibody is purified through a protein A column, followed by peptide affinity purification.

Storage

Maintain refrigerated at 2-8°C for up to 2 weeks. For long term storage store at -20°C in small aliquots to prevent freeze-thaw cycles.

Precautions

K1712 Antibody (C-term) is for research use only and not for use in diagnostic or therapeutic procedures.

K1712 Antibody (C-term) - Protein Information**Name** CEP44**Synonyms** KIAA1712

Function Centriole-enriched microtubule-binding protein involved in centriole biogenesis. In collaboration with CEP295 and POC1B, is required for the centriole-to-centrosome conversion by ensuring the formation of bona fide centriole wall (PubMed:[32060285](#)). Functions as a linker component that maintains centrosome cohesion. Associates with CROCC and regulates its stability and localization to the centrosome (PubMed:[31974111](#)).

Cellular Location

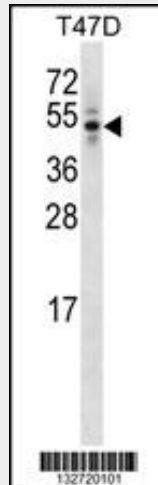
Cytoplasm, cytoskeleton, microtubule organizing center, centrosome. Cytoplasm, cytoskeleton, microtubule organizing center, centrosome, centriole. Cytoplasm, cytoskeleton, spindle pole. Midbody Note=Localizes to the proximal end of mother and daughter centrioles

K1712 Antibody (C-term) - Protocols

Provided below are standard protocols that you may find useful for product applications.

- [Western Blot](#)
- [Blocking Peptides](#)
- [Dot Blot](#)
- [Immunohistochemistry](#)
- [Immunofluorescence](#)
- [Immunoprecipitation](#)
- [Flow Cytometry](#)
- [Cell Culture](#)

K1712 Antibody (C-term) - Images



K1712 Antibody (C-term) (Cat. #AP18343b) western blot analysis in T47D cell line lysates (35ug/lane). This demonstrates the K1712 Antibody detected the K1712 protein (arrow).

K1712 Antibody (C-term) - Background

The function of this protein remains unknown.

K1712 Antibody (C-term) - References

Ota, T., et al. Nat. Genet. 36(1):40-45(2004)