

OSTM1 Antibody (C-term)
Affinity Purified Rabbit Polyclonal Antibody (Pab)
Catalog # AP18345b**Specification**

OSTM1 Antibody (C-term) - Product Information

Application	WB,E
Primary Accession	Q86WC4
Other Accession	Q8BGT0 , NP_054747.2
Reactivity	Human
Predicted	Mouse
Host	Rabbit
Clonality	Polyclonal
Isotype	Rabbit IgG
Calculated MW	37257
Antigen Region	292-321

OSTM1 Antibody (C-term) - Additional Information**Gene ID** 28962**Other Names**

Osteopetrosis-associated transmembrane protein 1, Chloride channel 7 beta subunit, OSTM1, GL

Target/Specificity

This OSTM1 antibody is generated from rabbits immunized with a KLH conjugated synthetic peptide between 292-321 amino acids from the C-terminal region of human OSTM1.

Dilution

WB~~1:1000

E~~Use at an assay dependent concentration.

Format

Purified polyclonal antibody supplied in PBS with 0.09% (W/V) sodium azide. This antibody is purified through a protein A column, followed by peptide affinity purification.

Storage

Maintain refrigerated at 2-8°C for up to 2 weeks. For long term storage store at -20°C in small aliquots to prevent freeze-thaw cycles.

Precautions

OSTM1 Antibody (C-term) is for research use only and not for use in diagnostic or therapeutic procedures.

OSTM1 Antibody (C-term) - Protein Information**Name** OSTM1

Synonyms GL

Function Required for osteoclast and melanocyte maturation and function.

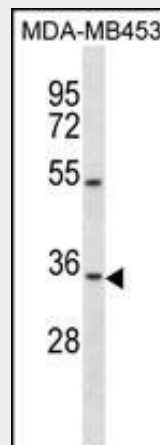
Cellular Location

Lysosome membrane; Single-pass type I membrane protein Note=Requires CLCN7 to travel to lysosomes

OSTM1 Antibody (C-term) - Protocols

Provided below are standard protocols that you may find useful for product applications.

- [Western Blot](#)
- [Blocking Peptides](#)
- [Dot Blot](#)
- [Immunohistochemistry](#)
- [Immunofluorescence](#)
- [Immunoprecipitation](#)
- [Flow Cytometry](#)
- [Cell Culture](#)

OSTM1 Antibody (C-term) - Images

OSTM1 Antibody (C-term) (Cat. #AP18345b) western blot analysis in MDA-MB453 cell line lysates (35ug/lane). This demonstrates the OSTM1 Antibody detected the OSTM1 protein (arrow).

OSTM1 Antibody (C-term) - Background

This gene encodes a protein that may be involved in the degradation of G proteins via the ubiquitin-dependent proteasome pathway. The encoded protein binds to members of subfamily A of the regulator of the G-protein signaling (RGS) family through an N-terminal leucine-rich region. This protein also has a central RING finger-like domain and E3 ubiquitin ligase activity. This protein is highly conserved from flies to humans. Defects in this gene may cause the autosomal recessive, infantile malignant form of osteopetrosis.

OSTM1 Antibody (C-term) - References

Yerges, L.M., et al. J. Bone Miner. Res. 24(12):2039-2049(2009)
Mazzolari, E., et al. Am. J. Hematol. 84(8):473-479(2009)
Vieira, A.R., et al. Genet. Med. 10(9):668-674(2008)
Feigin, M.E., et al. Cell. Signal. 20(5):949-957(2008)
Maranda, B., et al. J. Bone Miner. Res. 23(2):296-300(2008)