

**TULP2 Antibody (Center)**  
**Affinity Purified Rabbit Polyclonal Antibody (Pab)**  
**Catalog # AP18364C****Specification**

---

**TULP2 Antibody (Center) - Product Information**

Application	WB,E
Primary Accession	<a href="#">O00295</a>
Other Accession	<a href="#">NP_003314.2</a>
Reactivity	Human
Host	Rabbit
Clonality	Polyclonal
Isotype	Rabbit IgG
Calculated MW	58664
Antigen Region	274-301

**TULP2 Antibody (Center) - Additional Information****Gene ID** 7288**Other Names**

Tubby-related protein 2, Cancer/testis antigen 65, CT65, Tubby-like protein 2, TULP2, TUBL2

**Target/Specificity**

This TULP2 antibody is generated from rabbits immunized with a KLH conjugated synthetic peptide between 274-301 amino acids from the Central region of human TULP2.

**Dilution**

WB~~1:1000

E~~Use at an assay dependent concentration.

**Format**

Purified polyclonal antibody supplied in PBS with 0.09% (W/V) sodium azide. This antibody is purified through a protein A column, followed by peptide affinity purification.

**Storage**

Maintain refrigerated at 2-8°C for up to 2 weeks. For long term storage store at -20°C in small aliquots to prevent freeze-thaw cycles.

**Precautions**

TULP2 Antibody (Center) is for research use only and not for use in diagnostic or therapeutic procedures.

**TULP2 Antibody (Center) - Protein Information****Name** TULP2**Synonyms** TUBL2

**Cellular Location**

Cytoplasm. Secreted. Note=Does not have a cleavable signal peptide and is secreted by a non-conventional pathway.

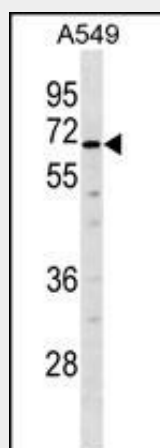
**Tissue Location**

Strongly expressed in testis. Also expressed in retina. Expressed in cancer cell lines.

**TULP2 Antibody (Center) - Protocols**

Provided below are standard protocols that you may find useful for product applications.

- [Western Blot](#)
- [Blocking Peptides](#)
- [Dot Blot](#)
- [Immunohistochemistry](#)
- [Immunofluorescence](#)
- [Immunoprecipitation](#)
- [Flow Cytometry](#)
- [Cell Culture](#)

**TULP2 Antibody (Center) - Images**

TULP2 Antibody (Center) (Cat. #AP18364c) western blot analysis in A549 cell line lysates (35ug/lane). This demonstrates the TULP2 Antibody detected the TULP2 protein (arrow).

**TULP2 Antibody (Center) - Background**

TULP2 is a member of a family of tubby-like genes (TULPs) that encode proteins of unknown function. Members of this family have been identified in plants, vertebrates, and invertebrates. The TULP proteins share a conserved C-terminal region of approximately 200 amino acid residues.

**TULP2 Antibody (Center) - References**

Carroll, K., et al. Nat. Rev. Mol. Cell Biol. 5(1):55-63(2004)  
Boggon, T.J., et al. Science 286(5447):2119-2125(1999)  
North, M.A., et al. Proc. Natl. Acad. Sci. U.S.A. 94(7):3128-3133(1997)