

**METTL6 Antibody (Center)**  
**Affinity Purified Rabbit Polyclonal Antibody (Pab)**  
**Catalog # AP18368c****Specification**

---

**METTL6 Antibody (Center) - Product Information**

Application	WB,E
Primary Accession	<a href="#">Q8TCB7</a>
Other Accession	<a href="#">NP_689609.2</a>
Reactivity	Human, Mouse
Host	Rabbit
Clonality	Polyclonal
Isotype	Rabbit IgG
Calculated MW	33251
Antigen Region	168-195

**METTL6 Antibody (Center) - Additional Information****Gene ID** 131965**Other Names**

Methyltransferase-like protein 6, 211-, METTL6

**Target/Specificity**

This METTL6 antibody is generated from rabbits immunized with a KLH conjugated synthetic peptide between 168-195 amino acids from the Central region of human METTL6.

**Dilution**

WB~~1:1000

E~~Use at an assay dependent concentration.

**Format**

Purified polyclonal antibody supplied in PBS with 0.09% (W/V) sodium azide. This antibody is purified through a protein A column, followed by peptide affinity purification.

**Storage**

Maintain refrigerated at 2-8°C for up to 2 weeks. For long term storage store at -20°C in small aliquots to prevent freeze-thaw cycles.

**Precautions**

METTL6 Antibody (Center) is for research use only and not for use in diagnostic or therapeutic procedures.

**METTL6 Antibody (Center) - Protein Information****Name** METTL6 {ECO:0000303|PubMed:32923617, ECO:0000312|HGNC:HGNC:28343}**Function** S-adenosyl-L-methionine-dependent methyltransferase that mediates

N(3)-methylcytidine modification of residue 32 of the tRNA anticodon loop of tRNA(Ser), including tRNA(Ser)(UGA) and tRNA(Ser)(GCU) (PubMed:[32923617](#), PubMed:[34268557](#), PubMed:[34862464](#), PubMed:[34922197](#)). Interaction with SARS1/SerRS is required for N(3)- methylcytidine methylation (PubMed:[34268557](#)).

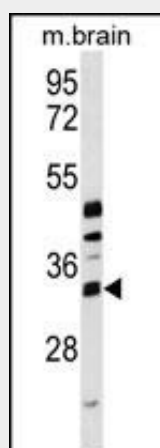
**Cellular Location**

Cytoplasm. Nucleus

**METTL6 Antibody (Center) - Protocols**

Provided below are standard protocols that you may find useful for product applications.

- [Western Blot](#)
- [Blocking Peptides](#)
- [Dot Blot](#)
- [Immunohistochemistry](#)
- [Immunofluorescence](#)
- [Immunoprecipitation](#)
- [Flow Cytometry](#)
- [Cell Culture](#)

**METTL6 Antibody (Center) - Images**

METTL6 Antibody (Center) (Cat. #AP18368c) western blot analysis in mouse brain tissue lysates (35ug/lane). This demonstrates the METTL6 Antibody detected the METTL6 protein (arrow).

**METTL6 Antibody (Center) - Background**

Probable methyltransferase (By similarity).

**METTL6 Antibody (Center) - References**

McArdle, P.F., et al. Arthritis Rheum. 58(9):2874-2881(2008)