

NXF5 Antibody (N-term)
Affinity Purified Rabbit Polyclonal Antibody (Pab)
Catalog # AP18378a

Specification

NXF5 Antibody (N-term) - Product Information

Application	WB,E
Primary Accession	O9H1B4
Other Accession	O9GZY0 , NP_116564.2
Reactivity	Human
Host	Rabbit
Clonality	Polyclonal
Isotype	Rabbit IgG
Calculated MW	45628
Antigen Region	53-80

NXF5 Antibody (N-term) - Additional Information

Other Names

Nuclear RNA export factor 5, TAP-like protein 1, TAPL-1, NXF5, TAPL1

Target/Specificity

This NXF5 antibody is generated from rabbits immunized with a KLH conjugated synthetic peptide between 53-80 amino acids from the N-terminal region of human NXF5.

Dilution

WB~~1:1000

E~~Use at an assay dependent concentration.

Format

Purified polyclonal antibody supplied in PBS with 0.09% (W/V) sodium azide. This antibody is purified through a protein A column, followed by peptide affinity purification.

Storage

Maintain refrigerated at 2-8°C for up to 2 weeks. For long term storage store at -20°C in small aliquots to prevent freeze-thaw cycles.

Precautions

NXF5 Antibody (N-term) is for research use only and not for use in diagnostic or therapeutic procedures.

NXF5 Antibody (N-term) - Protein Information

Name NXF5

Synonyms TAPL1

Function Could be involved in the export of mRNA from the nucleus to the cytoplasm. Could also

have a role in polarized cytoplasmic transport and localization of mRNA in neurons.

Cellular Location

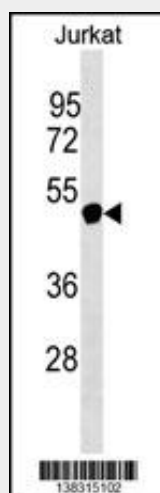
Cytoplasm. Nucleus. Note=Mainly localized in the cytoplasm of cells and more particularly in the cell body and neurites of hippocampal neurons. Although nuclear localization is also observed Not detected at nuclear rim

NXF5 Antibody (N-term) - Protocols

Provided below are standard protocols that you may find useful for product applications.

- [Western Blot](#)
- [Blocking Peptides](#)
- [Dot Blot](#)
- [Immunohistochemistry](#)
- [Immunofluorescence](#)
- [Immunoprecipitation](#)
- [Flow Cytometry](#)
- [Cell Culture](#)

NXF5 Antibody (N-term) - Images



NXF5 Antibody (N-term) (Cat. #AP18378a) western blot analysis in Jurkat cell line lysates (35ug/lane). This demonstrates the NXF5 Antibody detected the NXF5 protein (arrow).

NXF5 Antibody (N-term) - Background

This gene is one member of a family of nuclear RNA export factor genes. The encoded protein can bind RNA, and is implicated in mRNA nuclear export. However, this protein has lost several C-terminal protein domains found in other family members that are required for export activity, and may be an evolving pseudogene. Alternatively spliced transcript variants have been described, but most are candidates for nonsense-mediated decay (NMD) and may not express proteins in vivo.

NXF5 Antibody (N-term) - References

Tarpey, P.S., et al. Nat. Genet. 41(5):535-543(2009)
Hillman, R.T., et al. Genome Biol. 5 (2), R8 (2004) :
Frints, S.G., et al. Am. J. Med. Genet. A 119A (3), 367-374 (2003) :
Jun, L., et al. Curr. Biol. 11(18):1381-1391(2001)
Herold, A., et al. Mol. Cell. Biol. 20(23):8996-9008(2000)