

SERPINB12 Antibody (Center)
Affinity Purified Rabbit Polyclonal Antibody (Pab)
Catalog # AP18389c**Specification**

SERPINB12 Antibody (Center) - Product Information

Application	WB,E
Primary Accession	Q96P63
Other Accession	NP_536722.1
Reactivity	Human
Host	Rabbit
Clonality	Polyclonal
Isotype	Rabbit IgG
Calculated MW	46276
Antigen Region	131-157

SERPINB12 Antibody (Center) - Additional Information**Gene ID** 89777**Other Names**

Serpins B12, SERPINB12

Target/Specificity

This SERPINB12 antibody is generated from rabbits immunized with a KLH conjugated synthetic peptide between 131-157 amino acids from the Central region of human SERPINB12.

Dilution

WB~~1:1000

E~~Use at an assay dependent concentration.

Format

Purified polyclonal antibody supplied in PBS with 0.09% (W/V) sodium azide. This antibody is purified through a protein A column, followed by peptide affinity purification.

Storage

Maintain refrigerated at 2-8°C for up to 2 weeks. For long term storage store at -20°C in small aliquots to prevent freeze-thaw cycles.

Precautions

SERPINB12 Antibody (Center) is for research use only and not for use in diagnostic or therapeutic procedures.

SERPINB12 Antibody (Center) - Protein Information**Name** SERPINB12**Function** Inhibits trypsin and plasmin, but not thrombin, coagulation factor Xa, or urokinase-type

plasminogen activator (PubMed:[11604408](#)). May play a role in cell differentiation (PubMed:[30045019](#)).

Cellular Location

Cytoplasm.

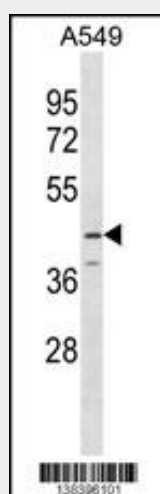
Tissue Location

Expressed in many tissues, including brain, bone marrow, lymph node, heart, lung, liver, pancreas, testis, ovary, and intestine.

SERPINB12 Antibody (Center) - Protocols

Provided below are standard protocols that you may find useful for product applications.

- [Western Blot](#)
- [Blocking Peptides](#)
- [Dot Blot](#)
- [Immunohistochemistry](#)
- [Immunofluorescence](#)
- [Immunoprecipitation](#)
- [Flow Cytometry](#)
- [Cell Culture](#)

SERPINB12 Antibody (Center) - Images

SERPINB12 Antibody (Center) (Cat. #AP18389c) western blot analysis in A549 cell line lysates (35ug/lane). This demonstrates the SERPINB12 Antibody detected the SERPINB12 protein (arrow).

SERPINB12 Antibody (Center) - Background

SERPINB12 inhibits trypsin and plasmin, but not thrombin, coagulation factor Xa, or urokinase-type plasminogen activator.

SERPINB12 Antibody (Center) - References

Askew, Y.S., et al. J. Biol. Chem. 276(52):49320-49330(2001)