

**SIRPD Antibody (Center)**  
**Affinity Purified Rabbit Polyclonal Antibody (Pab)**  
**Catalog # AP18390c****Specification**

---

**SIRPD Antibody (Center) - Product Information**

Application	WB,E
Primary Accession	<a href="#">O9H106</a>
Other Accession	<a href="#">NP_848555.2</a>
Reactivity	Human
Host	Rabbit
Clonality	Polyclonal
Isotype	Rabbit IgG
Calculated MW	21687
Antigen Region	107-133

**SIRPD Antibody (Center) - Additional Information****Gene ID** 128646**Other Names**

Signal-regulatory protein delta, SIRP-delta, Protein tyrosine phosphatase non-receptor type substrate 1-like 2, SIRPD, PTPNS1L2

**Target/Specificity**

This SIRPD antibody is generated from rabbits immunized with a KLH conjugated synthetic peptide between 107-133 amino acids from the Central region of human SIRPD.

**Dilution**

WB~~1:1000

E~~Use at an assay dependent concentration.

**Format**

Purified polyclonal antibody supplied in PBS with 0.09% (W/V) sodium azide. This antibody is purified through a protein A column, followed by peptide affinity purification.

**Storage**

Maintain refrigerated at 2-8°C for up to 2 weeks. For long term storage store at -20°C in small aliquots to prevent freeze-thaw cycles.

**Precautions**

SIRPD Antibody (Center) is for research use only and not for use in diagnostic or therapeutic procedures.

**SIRPD Antibody (Center) - Protein Information****Name** SIRPD

**Synonyms** PTPNS1L2

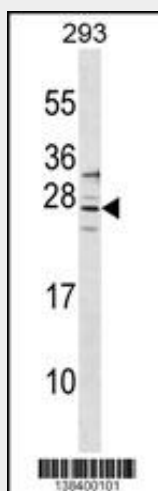
**Cellular Location**  
Secreted.

### SIRPD Antibody (Center) - Protocols

Provided below are standard protocols that you may find useful for product applications.

- [Western Blot](#)
- [Blocking Peptides](#)
- [Dot Blot](#)
- [Immunohistochemistry](#)
- [Immunofluorescence](#)
- [Immunoprecipitation](#)
- [Flow Cytometry](#)
- [Cell Culture](#)

### SIRPD Antibody (Center) - Images



SIRPD Antibody (Center) (Cat. #AP18390c) western blot analysis in 293 cell line lysates (35ug/lane). This demonstrates the SIRPD Antibody detected the SIRPD protein (arrow).

### SIRPD Antibody (Center) - Background

Contains 1 Ig-like V-type (immunoglobulin-like) domain.

### SIRPD Antibody (Center) - References

van den Berg, T.K., et al. J. Immunol. 175(12):7788-7789(2005)  
Deloukas, P., et al. Nature 414(6866):865-871(2001)