

**GOLGA6A Antibody (C-term)**  
**Affinity Purified Rabbit Polyclonal Antibody (Pab)**  
**Catalog # AP18412B**

**Specification**

---

**GOLGA6A Antibody (C-term) - Product Information**

Application	WB,E
Primary Accession	<a href="#">Q9NYA3</a>
Other Accession	<a href="#">P0CG33</a> , <a href="#">A6NDK9</a> , <a href="#">A6NDN3</a> , <a href="#">NP_001033729.2</a>
Reactivity	Human
Host	Rabbit
Clonality	Polyclonal
Isotype	Rabbit IgG
Calculated MW	79946
Antigen Region	516-543

**GOLGA6A Antibody (C-term) - Additional Information**

**Gene ID** 342096

**Other Names**

Golgin subfamily A member 6A, Golgin linked to PML, Golgin-like protein, GOLGA6A, GLP, GOLGA6

**Target/Specificity**

This GOLGA6A antibody is generated from rabbits immunized with a KLH conjugated synthetic peptide between 516-543 amino acids from the C-terminal region of human GOLGA6A.

**Dilution**

WB~~1:1000

**Format**

Purified polyclonal antibody supplied in PBS with 0.09% (W/V) sodium azide. This antibody is purified through a protein A column, followed by peptide affinity purification.

**Storage**

Maintain refrigerated at 2-8°C for up to 2 weeks. For long term storage store at -20°C in small aliquots to prevent freeze-thaw cycles.

**Precautions**

GOLGA6A Antibody (C-term) is for research use only and not for use in diagnostic or therapeutic procedures.

**GOLGA6A Antibody (C-term) - Protein Information**

**Name** GOLGA6A

**Synonyms** GLP, GOLGA6

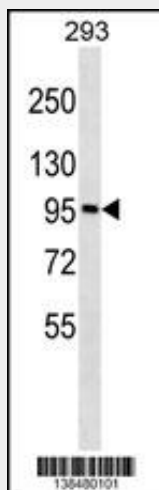
**Tissue Location**

Highly expressed in seminiferous tubes in testis. Highly expressed in spermatids, barely detectable in late pachytene spermatocytes, and not detectable in spermatogonia. Detected at intermediate levels in pancreas and lymph nodes, and at much lower levels in spleen, peripheral blood leukocytes, skeletal muscle, liver, lung, placenta, brain and heart

**GOLGA6A Antibody (C-term) - Protocols**

Provided below are standard protocols that you may find useful for product applications.

- [Western Blot](#)
- [Blocking Peptides](#)
- [Dot Blot](#)
- [Immunohistochemistry](#)
- [Immunofluorescence](#)
- [Immunoprecipitation](#)
- [Flow Cytometry](#)
- [Cell Culture](#)

**GOLGA6A Antibody (C-term) - Images**

GOLGA6A Antibody (C-term) (Cat. #AP18412b) western blot analysis in 293 cell line lysates (35ug/lane). This demonstrates the GOLGA6A Antibody detected the GOLGA6A protein (arrow).

**GOLGA6A Antibody (C-term) - Background**

The Golgi apparatus, which participates in glycosylation and transport of proteins and lipids in the secretory pathway, consists of a series of stacked cisternae (flattened membrane sacs). Interactions between the Golgi and microtubules are thought to be important for the reorganization of the Golgi after it fragments during mitosis. The protein encoded by this gene is a member of the golgin family of proteins, whose members localize to the Golgi. This gene is found in a large, low copy repeat sequence or duplicon that is found in multiple copies, that are greater than 90% similar, on chromosome 15. Duplicons are associated with deletions, inversions and other chromosome rearrangements that underlie genomic disease. The protein encoded by this gene is

thought to be a functional golgin protein while the majority of the related copies of this gene are thought to be transcribed pseudogenes.

#### **GOLGA6A Antibody (C-term) - References**

Ventura, M., et al. Genome Res. 13(9):2059-2068(2003)  
Pujana, M.A., et al. Eur. J. Hum. Genet. 10(1):26-35(2002)  
Gratacos, M., et al. Cell 106(3):367-379(2001)  
Pujana, M.A., et al. Genome Res. 11(1):98-111(2001)  
Gilles, F., et al. Genomics 70(3):364-374(2000)