

SFMBT1 Antibody (N-term)
Affinity Purified Rabbit Polyclonal Antibody (Pab)
Catalog # AP18430A**Specification**

SFMBT1 Antibody (N-term) - Product Information

Application	WB,E
Primary Accession	O9UHJ3
Other Accession	NP_001005158.1
Reactivity	Human
Host	Rabbit
Clonality	Polyclonal
Isotype	Rabbit IgG
Calculated MW	98141
Antigen Region	20-47

SFMBT1 Antibody (N-term) - Additional Information**Gene ID** 51460**Other Names**

Scm-like with four MBT domains protein 1, hSFMBT, Renal ubiquitous protein 1, SFMBT1, RU1

Target/Specificity

This SFMBT1 antibody is generated from rabbits immunized with a KLH conjugated synthetic peptide between 20-47 amino acids from the N-terminal region of human SFMBT1.

Dilution

WB~~1:1000

E~~Use at an assay dependent concentration.

Format

Purified polyclonal antibody supplied in PBS with 0.09% (W/V) sodium azide. This antibody is purified through a protein A column, followed by peptide affinity purification.

Storage

Maintain refrigerated at 2-8°C for up to 2 weeks. For long term storage store at -20°C in small aliquots to prevent freeze-thaw cycles.

Precautions

SFMBT1 Antibody (N-term) is for research use only and not for use in diagnostic or therapeutic procedures.

SFMBT1 Antibody (N-term) - Protein Information**Name** SFMBT1**Synonyms** RU1

Function Histone-binding protein, which is part of various corepressor complexes. Mediates the recruitment of corepressor complexes to target genes, followed by chromatin compaction and repression of transcription. Plays a role during myogenesis: required for the maintenance of undifferentiated states of myogenic progenitor cells via interaction with MYOD1. Interaction with MYOD1 leads to the recruitment of associated corepressors and silencing of MYOD1 target genes. Part of the SLC complex in germ cells, where it may play a role during spermatogenesis.

Cellular Location

Nucleus.

Tissue Location

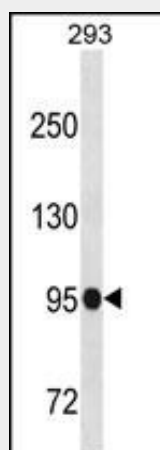
Expressed in all cell lines and normal tissues tested, including the thymus.

SFMBT1 Antibody (N-term) - Protocols

Provided below are standard protocols that you may find useful for product applications.

- [Western Blot](#)
- [Blocking Peptides](#)
- [Dot Blot](#)
- [Immunohistochemistry](#)
- [Immunofluorescence](#)
- [Immunoprecipitation](#)
- [Flow Cytometry](#)
- [Cell Culture](#)

SFMBT1 Antibody (N-term) - Images



SFMBT1 Antibody (N-term) (Cat. #AP18430a) western blot analysis in 293 cell line lysates (35ug/lane). This demonstrates the SFMBT1 Antibody detected the SFMBT1 protein (arrow).

SFMBT1 Antibody (N-term) - Background

This gene shares high similarity with the Drosophila Scm (sex comb on midleg) gene. It encodes a protein which contains four malignant brain tumor repeat (mbt) domains and may be involved in antigen recognition. Several alternative splice variants that encode the same protein have been characterized. [provided by RefSeq].

SFMBT1 Antibody (N-term) - References

Wu, S., et al. FEBS Lett. 581(17):3289-3296(2007)