

GYG2 Antibody (C-term)
Affinity Purified Rabbit Polyclonal Antibody (Pab)
Catalog # AP18439b

Specification

GYG2 Antibody (C-term) - Product Information

Application	WB,E
Primary Accession	O15488
Other Accession	NP_001073324.1
Reactivity	Human
Host	Rabbit
Clonality	Polyclonal
Isotype	Rabbit IgG
Calculated MW	55184
Antigen Region	457-483

GYG2 Antibody (C-term) - Additional Information

Gene ID 8908

Other Names

Glycogenin-2, GN-2, GN2, GYG2

Target/Specificity

This GYG2 antibody is generated from rabbits immunized with a KLH conjugated synthetic peptide between 457-483 amino acids from the C-terminal region of human GYG2.

Dilution

WB~~1:1000

E~~Use at an assay dependent concentration.

Format

Purified polyclonal antibody supplied in PBS with 0.09% (W/V) sodium azide. This antibody is purified through a protein A column, followed by peptide affinity purification.

Storage

Maintain refrigerated at 2-8°C for up to 2 weeks. For long term storage store at -20°C in small aliquots to prevent freeze-thaw cycles.

Precautions

GYG2 Antibody (C-term) is for research use only and not for use in diagnostic or therapeutic procedures.

GYG2 Antibody (C-term) - Protein Information

Name GYG2

Function Glycogenin participates in the glycogen biosynthetic process along with glycogen

synthase and glycogen branching enzyme. It catalyzes the formation of a short alpha (1,4)-glucosyl chain covalently attached via a glucose 1-O-tyrosyl linkage to internal tyrosine residues and these chains act as primers for the elongation reaction catalyzed by glycogen synthase.

Cellular Location

Cytoplasm {ECO:0000250|UniProtKB:P13280}. Nucleus {ECO:0000250|UniProtKB:P13280}. Note=Localizes to glycogen granules (glycosomes) in the cytoplasm (By similarity). Cytosolic localization is dependent on the actin cytoskeleton (By similarity) {ECO:0000250|UniProtKB:C4R941, ECO:0000250|UniProtKB:P13280}

Tissue Location

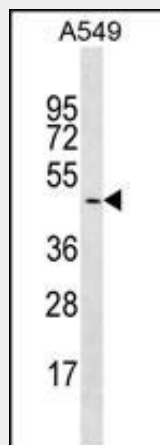
Detected in liver (at protein level) (PubMed:9857012). Expressed preferentially in liver, heart, and pancreas (PubMed:9346895).

GYG2 Antibody (C-term) - Protocols

Provided below are standard protocols that you may find useful for product applications.

- [Western Blot](#)
- [Blocking Peptides](#)
- [Dot Blot](#)
- [Immunohistochemistry](#)
- [Immunofluorescence](#)
- [Immunoprecipitation](#)
- [Flow Cytometry](#)
- [Cell Culture](#)

GYG2 Antibody (C-term) - Images



GYG2 Antibody (C-term) (Cat. #AP18439b) western blot analysis in A549 cell line lysates (35ug/lane). This demonstrates the GYG2 Antibody detected the GYG2 protein (arrow).

GYG2 Antibody (C-term) - Background

This gene encodes a member of the the glycogenin family. Glycogenin is a self-glucosylating protein involved in the initiation reactions of glycogen biosynthesis. A gene on chromosome 3 encodes the muscle glycogenin and this X-linked gene encodes the glycogenin mainly present in liver; both are involved in blood

glucose homeostasis. This gene has a short version on chromosome Y, which is 3' truncated and can not make a functional protein. Multiple alternatively spliced transcript variants encoding different isoforms have been identified.

GYG2 Antibody (C-term) - References

Gibbons, B.J., et al. J. Mol. Biol. 319(2):463-477(2002)
Harris, R.A., et al. Proteomics 2(2):212-223(2002)
Zhai, L., et al. Gene 242 (1-2), 229-235 (2000) :
Mu, J., et al. J. Biol. Chem. 273(52):34850-34856(1998)
Orho, M., et al. J. Clin. Invest. 102(3):507-515(1998)