

**MYL6 Antibody (Center)**  
**Affinity Purified Rabbit Polyclonal Antibody (Pab)**  
**Catalog # AP18440c**

**Specification**

---

**MYL6 Antibody (Center) - Product Information**

Application	WB,E
Primary Accession	<a href="#">P60660</a>
Other Accession	<a href="#">Q64119</a> , <a href="#">P60662</a> , <a href="#">Q60605</a> , <a href="#">P60661</a> , <a href="#">P14649</a> , <a href="#">NP_066299.2</a>
Reactivity	Human
Predicted	Bovine, Mouse, Pig, Rat
Host	Rabbit
Clonality	Polyclonal
Isotype	Rabbit IgG
Calculated MW	16930
Antigen Region	32-59

**MYL6 Antibody (Center) - Additional Information**

**Gene ID** 4637

**Other Names**

Myosin light polypeptide 6, 17 kDa myosin light chain, LC17, Myosin light chain 3, MLC-3, Myosin light chain alkali 3, Myosin light chain A3, Smooth muscle and nonmuscle myosin light chain alkali 6, MYL6

**Target/Specificity**

This MYL6 antibody is generated from rabbits immunized with a KLH conjugated synthetic peptide between 32-59 amino acids from the Central region of human MYL6.

**Dilution**

WB~~1:1000

**Format**

Purified polyclonal antibody supplied in PBS with 0.09% (W/V) sodium azide. This antibody is purified through a protein A column, followed by peptide affinity purification.

**Storage**

Maintain refrigerated at 2-8°C for up to 2 weeks. For long term storage store at -20°C in small aliquots to prevent freeze-thaw cycles.

**Precautions**

MYL6 Antibody (Center) is for research use only and not for use in diagnostic or therapeutic procedures.

**MYL6 Antibody (Center) - Protein Information**

**Name** MYL6

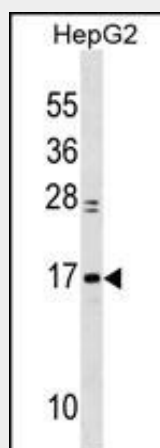
**Function** Regulatory light chain of myosin. Does not bind calcium.

### MYL6 Antibody (Center) - Protocols

Provided below are standard protocols that you may find useful for product applications.

- [Western Blot](#)
- [Blocking Peptides](#)
- [Dot Blot](#)
- [Immunohistochemistry](#)
- [Immunofluorescence](#)
- [Immunoprecipitation](#)
- [Flow Cytometry](#)
- [Cell Culture](#)

### MYL6 Antibody (Center) - Images



MYL6 Antibody (Center) (Cat. #AP18440c) western blot analysis in HepG2 cell line lysates (35ug/lane). This demonstrates the MYL6 Antibody detected the MYL6 protein (arrow).

### MYL6 Antibody (Center) - Background

Myosin is a hexameric ATPase cellular motor protein. It is composed of two heavy chains, two nonphosphorylatable alkali light chains, and two phosphorylatable regulatory light chains. This gene encodes a myosin alkali light chain that is expressed in smooth muscle and non-muscle tissues. Genomic sequences representing several pseudogenes have been described and two transcript variants encoding different isoforms have been identified for this gene.

### MYL6 Antibody (Center) - References

Rikova, K., et al. Cell 131(6):1190-1203(2007)  
Lamesch, P., et al. Genomics 89(3):307-315(2007)  
Fu, Z.Y., et al. Acta Biochim. Biophys. Sin. (Shanghai) 38(9):625-632(2006)  
Rush, J., et al. Nat. Biotechnol. 23(1):94-101(2005)  
Webb, R.C. Adv Physiol Educ 27 (1-4), 201-206 (2003) :