

FCRL1 Antibody (C-term)
Affinity Purified Rabbit Polyclonal Antibody (Pab)
Catalog # AP18448b**Specification**

FCRL1 Antibody (C-term) - Product Information

Application	WB,E
Primary Accession	O96LA6
Other Accession	NP_001152869.1
Reactivity	Human
Host	Rabbit
Clonality	Polyclonal
Isotype	Rabbit IgG
Calculated MW	46936
Antigen Region	366-392

FCRL1 Antibody (C-term) - Additional Information**Gene ID** 115350**Other Names**

Fc receptor-like protein 1, FcR-like protein 1, FCRL1, Fc receptor homolog 1, FcRH1, IFGP family protein 1, hIFGP1, Immune receptor translocation-associated protein 5, CD307a, FCRL1, FCRH1, IFGP1, IRTA5

Target/Specificity

This FCRL1 antibody is generated from rabbits immunized with a KLH conjugated synthetic peptide between 366-392 amino acids from the C-terminal region of human FCRL1.

Dilution

WB~~1:1000

E~~Use at an assay dependent concentration.

Format

Purified polyclonal antibody supplied in PBS with 0.09% (W/V) sodium azide. This antibody is purified through a protein A column, followed by peptide affinity purification.

Storage

Maintain refrigerated at 2-8°C for up to 2 weeks. For long term storage store at -20°C in small aliquots to prevent freeze-thaw cycles.

Precautions

FCRL1 Antibody (C-term) is for research use only and not for use in diagnostic or therapeutic procedures.

FCRL1 Antibody (C-term) - Protein Information**Name** FCRL1

Synonyms FCRH1, IFGP1, IRTA5

Function Type I transmembrane surface glycoprotein preferentially expressed by B-cells that regulates BCR-mediated signaling responses (PubMed:[15479727](#)). Recruits ABL1 as the intracellular effector molecule to enhance B-cell activation (By similarity). Also plays a negative role by suppressing ERK activation under homeostatic and BCR-stimulated conditions in a GRB2-dependent manner (By similarity).

Cellular Location

Cell membrane; Single-pass type I membrane protein

Tissue Location

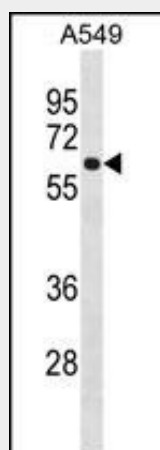
Primarily expressed in secondary lymphoid tissues by mature subsets of B-cells. Detected in spleen, lymph node, heart, skeletal muscle, kidney, liver and placenta. Specifically expressed by mature B lineage cells with higher expression in naive versus memory B- cells (at protein level).

FCRL1 Antibody (C-term) - Protocols

Provided below are standard protocols that you may find useful for product applications.

- [Western Blot](#)
- [Blocking Peptides](#)
- [Dot Blot](#)
- [Immunohistochemistry](#)
- [Immunofluorescence](#)
- [Immunoprecipitation](#)
- [Flow Cytometry](#)
- [Cell Culture](#)

FCRL1 Antibody (C-term) - Images



FCRL1 Antibody (C-term) (Cat. #AP18448b) western blot analysis in A549 cell line lysates (35ug/lane). This demonstrates the FCRL1 Antibody detected the FCRL1 protein (arrow).

FCRL1 Antibody (C-term) - Background

This gene encodes a member of the immunoglobulin receptor superfamily and is one of several Fc receptor-like glycoproteins clustered on the long arm of chromosome 1. The encoded protein contains three extracellular C2-like immunoglobulin domains, a

transmembrane domain and a cytoplasmic domain with two immunoreceptor-tyrosine activation motifs. This protein may play a role in the regulation of cancer cell growth. Alternative splicing results in multiple transcript variants.

FCRL1 Antibody (C-term) - References

Rose, J.E., et al. Mol. Med. 16 (7-8), 247-253 (2010) :
Davila, S., et al. Genes Immun. 11(3):232-238(2010)
Kazemi, T., et al. Cancer Immunol. Immunother. 58(6):989-996(2009)
Kazemi, T., et al. Int. J. Cancer 123(9):2113-2119(2008)
Du, X., et al. Blood 111(1):338-343(2008)