

GABARAPL3 Antibody (Center)
Affinity Purified Rabbit Polyclonal Antibody (Pab)
Catalog # AP18449c**Specification**

GABARAPL3 Antibody (Center) - Product Information

Application	WB,E
Primary Accession	Q9BY60
Reactivity	Human
Host	Rabbit
Clonality	Polyclonal
Isotype	Rabbit IgG
Calculated MW	13976
Antigen Region	27-53

GABARAPL3 Antibody (Center) - Additional Information**Other Names**

Gamma-aminobutyric acid receptor-associated protein-like 3, GABA(A) receptor-associated protein-like 3, GABARAPL3

Target/Specificity

This GABARAPL3 antibody is generated from rabbits immunized with a KLH conjugated synthetic peptide between 27-53 amino acids from the Central region of human GABARAPL3.

Dilution

WB~~1:1000

E~~Use at an assay dependent concentration.

Format

Purified polyclonal antibody supplied in PBS with 0.09% (W/V) sodium azide. This antibody is purified through a protein A column, followed by peptide affinity purification.

Storage

Maintain refrigerated at 2-8°C for up to 2 weeks. For long term storage store at -20°C in small aliquots to prevent freeze-thaw cycles.

Precautions

GABARAPL3 Antibody (Center) is for research use only and not for use in diagnostic or therapeutic procedures.

GABARAPL3 Antibody (Center) - Protein Information**Name** GABARAPL3

Function Ubiquitin-like modifier involved in autophagosome formation. Whereas LC3s are involved in elongation of the phagophore membrane, the GABARAP/GATE-16 subfamily is essential for a later stage in autophagosome maturation (By similarity).

Cellular Location

Cytoplasm, cytoskeleton. Cytoplasmic vesicle, autophagosome membrane; Lipid-anchor

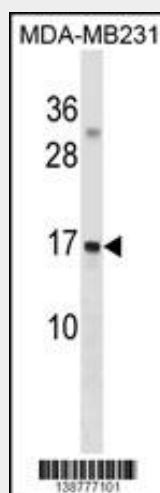
Tissue Location

Ubiquitous. Expressed at very high levels in the brain, heart, peripheral blood leukocytes, liver, kidney, placenta and skeletal muscle. Expressed at very low levels in thymus and small intestine.

GABARAPL3 Antibody (Center) - Protocols

Provided below are standard protocols that you may find useful for product applications.

- [Western Blot](#)
- [Blocking Peptides](#)
- [Dot Blot](#)
- [Immunohistochemistry](#)
- [Immunofluorescence](#)
- [Immunoprecipitation](#)
- [Flow Cytometry](#)
- [Cell Culture](#)

GABARAPL3 Antibody (Center) - Images

GABARAPL3 Antibody (Center) (Cat. #AP18449c) western blot analysis in MDA-MB231 cell line lysates (35ug/lane). This demonstrates the GABARAPL3 Antibody detected the GABARAPL3 protein (arrow).

GABARAPL3 Antibody (Center) - Background

The function of this protein remains unknown.